

## Electromagnetic Weighing Module

# CMM-620



## Electromagnetic Weighing Module – The Optimal Solution for Automated System Processes

Electromagnetic Weighing Module, CMM-620 features High Resolution of 1mg, Fast stabilization and Compact size. it is suitable for automated system processes that require supply control/filling and weight confirmation of trace powders and liquids, such as dispenser equipment for semiconductor/display production, secondary battery electrolyte injection equipment, and pharmaceutical/ammunition production lines.



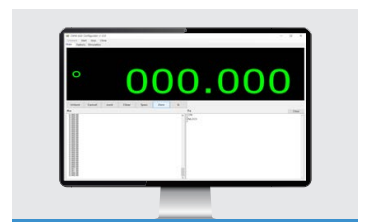
Fast Stabilization & High Resolution



Compact and Slim Size



IP65 Dust & Water-proof



Direct Connection to PC or PLC

# CMM-620

## ► FEATURES

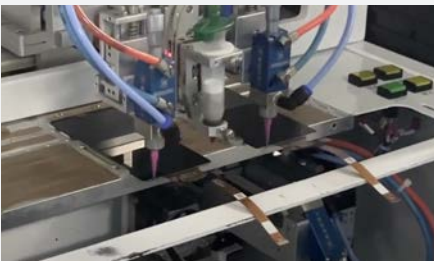
### Feature 1 Fast Stabilization & 1mg High Resolution

- Via Fast Stabilization (0~30g : 0.5sec, 30~620g : 0.7sec\*) and 1mg High Resolution, CMM-620 is Suitable for system processes that require quantitative control, such as dispenser equipment for semiconductor/display production, secondary battery and pharmaceutical (pill, capsule), ammunition production lines.

\*0~30g : 0.5sec / 30~620g : 0.7sec (When the weighing filter speed is set to the fastest and the stability band is set to  $\pm 4d$ .)



▲ Secondary Battery Electrolyte Injection Equipment



▲ Dispensing system

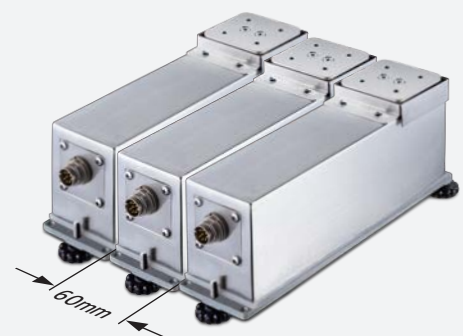
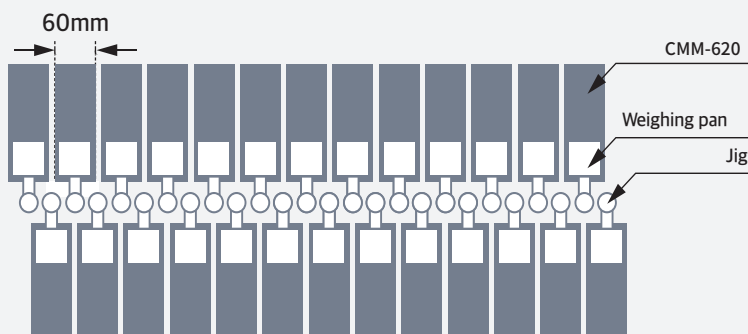


▲ Production Line for Pharmaceuticals and Ammunition



### Feature 2 Compact and Slim Size

- Compact and Slim structure with a width of 60mm can save space and increase utilization when building a system.



# Electromagnetic Weighing Module

## Feature 3 IP65 Dust and water-proof structure

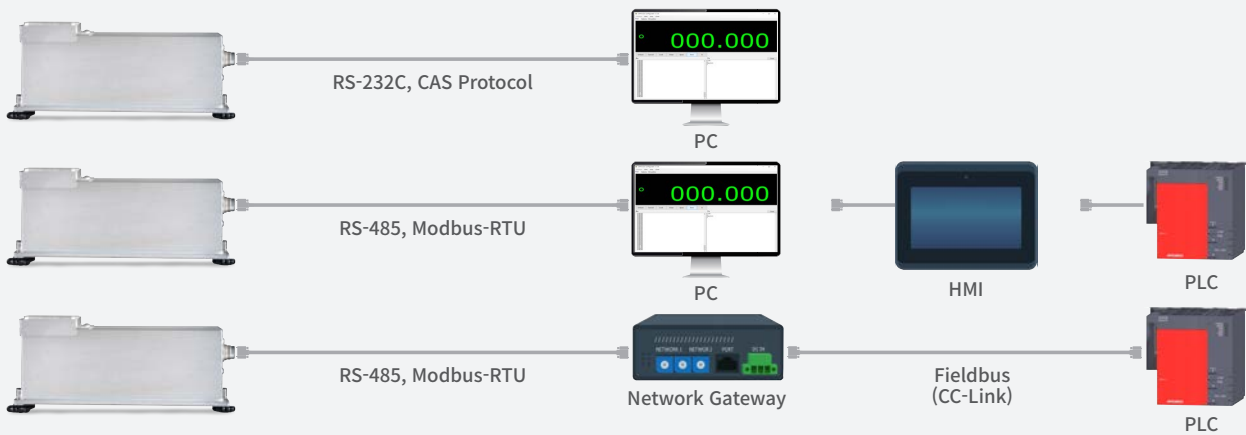
- With stainless steel housing and IP65 water/dustproof structure, it is suitable for weighing powder and liquid products. Also, in case of product contamination, it is possible to wash the product with water or liquid chemicals.



## Feature 4 Displaying and Directly Transferring Weighing data

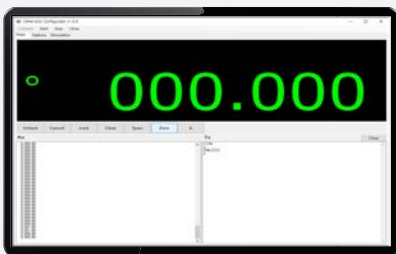
- Data transmission speed is up to 100times/sec, and weighing data can be directly transmitted to a PC or PLC without Indicator.

\*Communication Interface – Standard : RS-232C/RS-485(Modbus-RTU support) / Optional : RS-485 to CC-Link Network Gateway



## Feature 5 Easy setup via PC Software

- Via the intuitive CMM-dedicated PC software, easy to do a calibration and set parameters, monitor the weighing data.



**Main**

- ① Weighing Monitoring
- ② Zero Set
- ③ Calibration
- ④ Monitoring communication status



**Option**

- ① Weighing Display
- ② Filter parameter Setup
- ③ Calibration parameter Setup
- ④ Communication parameter Setup



**Simulation**

- ① Weighing filter setting simulator
- ② Viewable results before and after applying the filter.

## ► FEATURES

### 1. Fast Stabilization & 1mg High Resolution

Fast Stabilization (0~30g : 0.5sec / 30~620g : 0.7sec\*), 1mg High Resolution

\*When the weighing filter speed is set to the fastest and the stability band is set to  $\pm 4d$

### 2. Data Transmission Speed

High-speed data transmission of up to 100times/sec

### 3. Compact and Slim Size (Width : 60mm)

### 4. IP65 Dust & Water-proof Structure

### 5. Highly Durable Structure

### 6. Supports 12~24VDC

12~24VDC for seamless operation in various power environments.

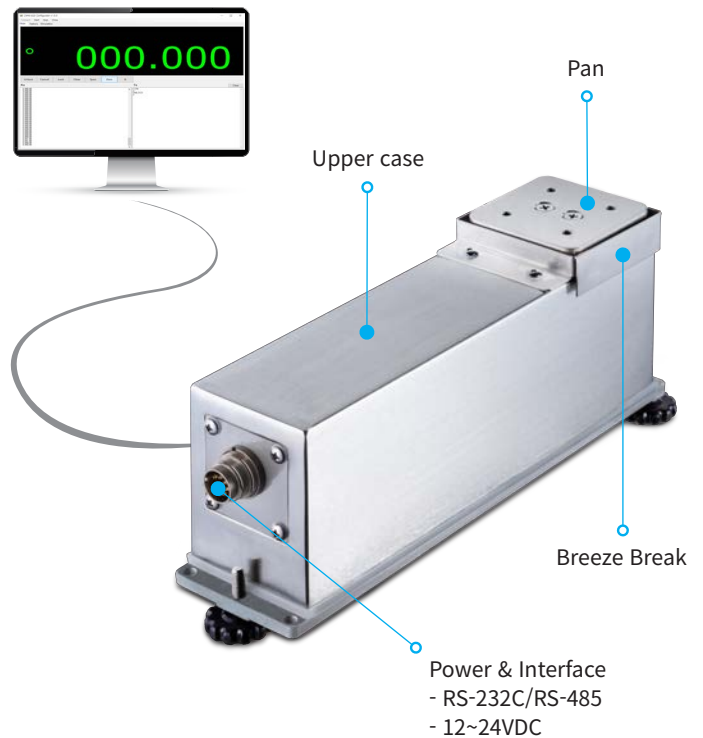
### 7. Direct Connection to PC or PLC

- Communication Interface

> Standard : RS-232C / RS-485(Modbus-RTU support)

> Optional : RS-485 to CC-Link Network Gateway

\*Direct Connection to a PC or PLC

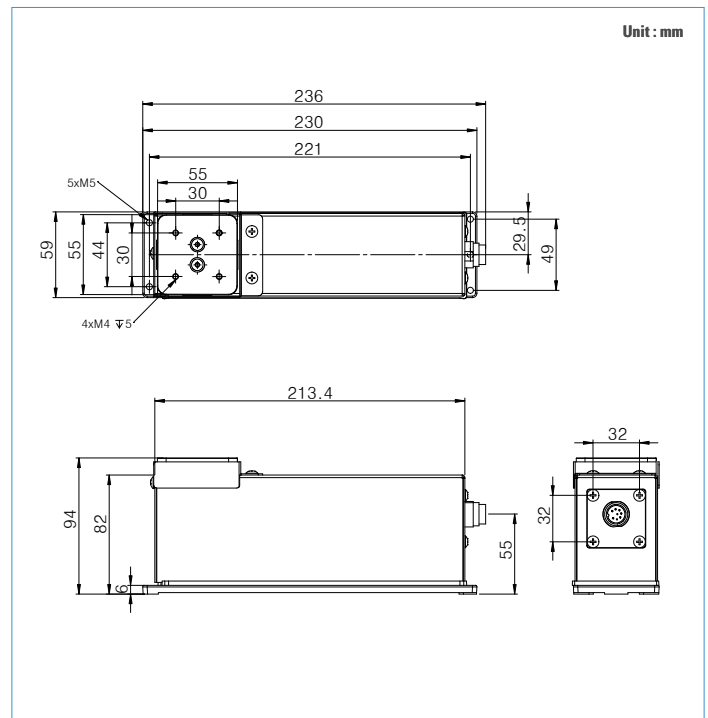


## ► SPECIFICATIONS

Model	CMM-620
Capacity	620g
Readability	0.001g (1mg)
Repeatability	0.001g (1mg)
Linearity	$\pm 0.003g$ (3mg)
Stabilization Time	0.5 sec (0~30g), 0.7 sec (30~620g)*
Data transmission speed	100 times/sec
IP Class	IPx5 or IP65(Optional)
Operating environment	5~40°C, 20~85% RH (In non-condensing conditions)
Temperature Drift	$\pm 3ppm/^{\circ}C$ (10~30°C)
Interface	RS-232C / RS-485 Cable Length : 3m(Standard, Waterproof connector), 10m(Optional, Waterproof connector)
Housing Material	Stainless steel
Product Size	60(W) x 236(D) x 94(H) mm
Pan Size	55 x 55 mm
Product Weight	2.2 kg
Power	12~24VDC
Option	RS-485 to CC-Link Network Gateway 10m Connection Cable(Waterproof Connector), 7" HMI

\*When the weighing filter speed is set to the fastest and the stability band is set to  $\pm 4d$

## ► DIMENSIONS



CAS Global Homepage

### CAS CORPORATION

CAS BLDG., 1315, YANGJAE-DAERO  
GANGDONG-GU, SEOUL, KOREA  
TEL\_82 2 2225 3500 / FAX\_82 2 475 4668

www.globalcas.com



\* Specifications are subject to change without notice improvement.

