



# SMART CHECKWEIGHER

CAS Automatic Checkweigher CCK700 series provides a precise and reliable response to the quality control needed to check the quantities and weights contained in pre-packaged products, look for defective items and identify shortages.

**CCK700 series**



# SMART CHECKWEIGHER

## CCK700 series

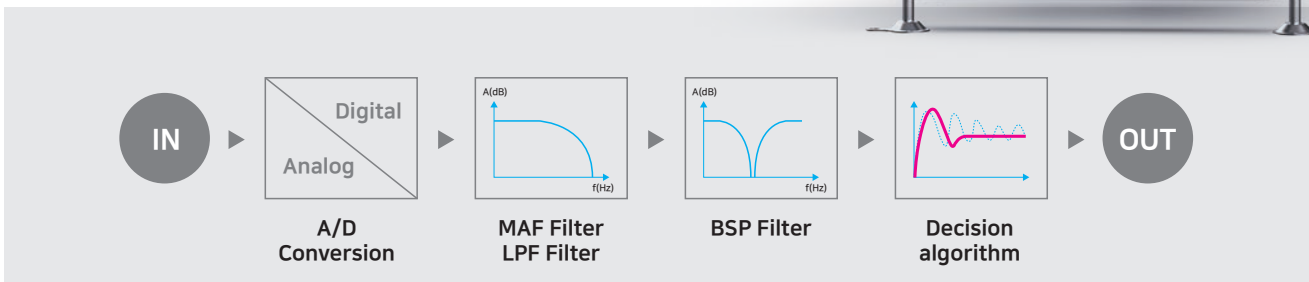
CAS Automatic Checkweigher CCK700 series provides a precise and reliable response to the quality control needed to check the quantities and weights contained in pre-packaged products, look for defective items and identify shortages. also, User-friendly GUI, various communication interfaces, modular structure, stainless steel materials are applied to facilitate system operation and maintenance for each usage environment.



### Usability

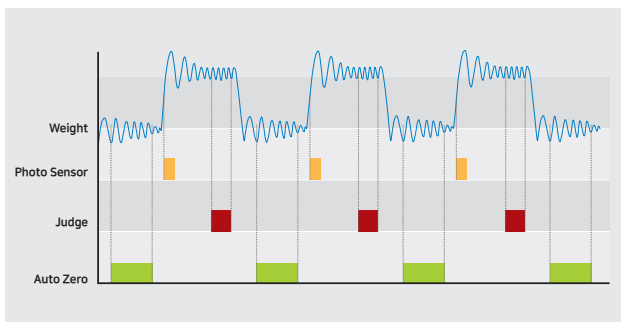
#### High Resolution Processing

CCK700 series is equipped with high-precision load cell and high-performance ADC (A/D Sampling: up to 800Hz), and provides optimal throughput and stability via multiple digital filtering and automatic zero tracking functions.



#### Optimization of Weighing Configuration

It is possible to set optimal filter conditions by automatically measuring throughput, belt speed and product length through sampling check of the weighed object.



#### Store up to 999 products

Storing & Recalling various information by item (stored info : tare weight, belt speed, high/low weight, throughput, product length)

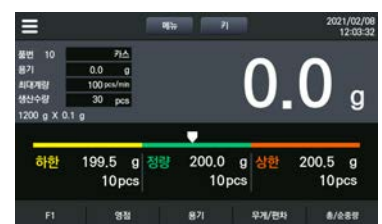


#### Language Change Function

Korean / English change function



[EN]



[KR]

## 8" Color Touch Screen Display & User-friendly Graphic User Interface

- 8" Color touch screen display with 800x480 of resolution
- User-friendly graphic user interface
- Support with QWERTY Keyboard



Feature Description Video



QWERTY Keyboard



## Various Weighing Screen

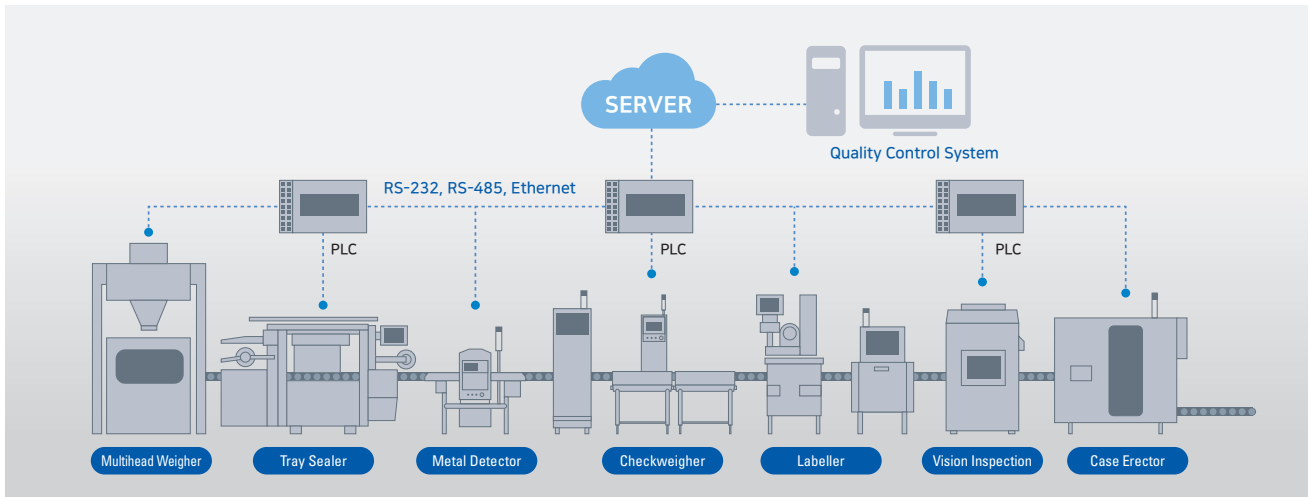
Screen switching is possible with simple operation (drag), and screen color is changed according to the judgment.



## Connectivity

### Various Interface

- Equipped with Ethernet & RS-232/485, USB as standard
- Data back-up(Data save as Excel csv.file) and Parameter set-up via USB memory

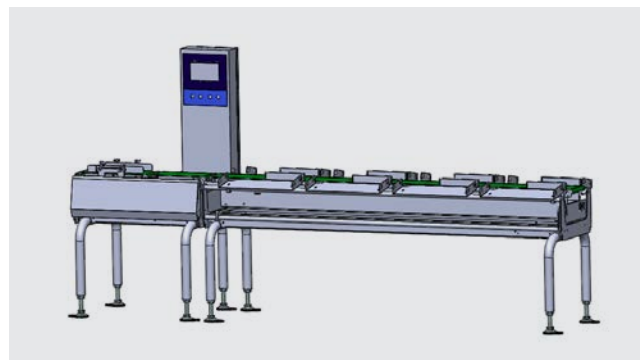


### Modbus Communication

- Equipped with Modbus RTU/Modbus TCP as standard.
- Operations such as stop & start weighing, changing item & checking No. of Throughput and rejected products can be set from an external device like PC & PLC, HMI.

### Various In/Output

- Equipped with Output for 2 level check-weighing as standard
- Equipped with Input for Metal detector and Output for multi-level check-weighing



## Maintenance & Flexibility

### Structure considering Hygiene & Durability

#### Easy to adjust tension of belt

Precision crown roller makes it easy to adjust the tension of the belt without any tools.



Feature Description Video

#### All stainless steel body

Good corrosion resistance

#### Via open & curved body design, easy cleaning

#### Safety Cover on driving part

By applying a safety cover on the driving part, it can prevent accidents when operating the equipment.



### Flexible response by each use environment

#### Modular conveyor to be easily replace and position-changed

Conveyor change and installation are easy, so it can easily respond to various products' length.



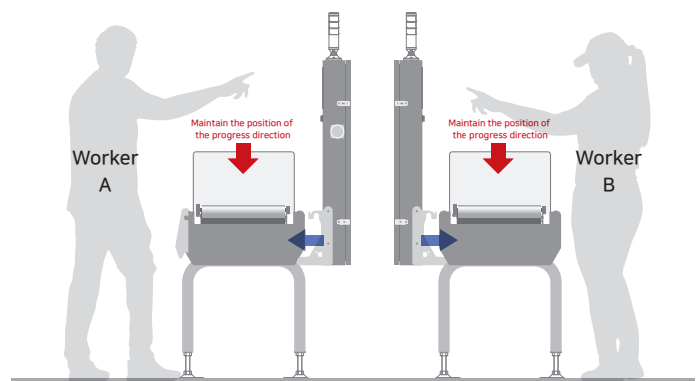
Feature Description Video



#### Easy to install & change conveyor belt via One-touch lock

#### Possible to change progress direction due to change of worker position

- Position change of Weighing & Feed part
- Position change of Control panel



## Model Selection Table

### Brief Specifications

Series	Model	Weighing Range	Display Resolution	Max. Accuracy	Max. Throughput	Max. product dimensions		Interval
						Width	Length	
CCK700	WB006	6 ~ 600 g	0.05 g	±0.1 g	400 ea/min.	130 mm	300 mm	Single Range
	WB012	10 ~ 1,200 g	0.1 g	±0.3 g	320 ea/min.	150 mm	400 mm	Multi Range
	WB030	30 ~ 3,000 g	0.5 g	±1 g	170 ea/min.	220 mm	500 mm	Single Range
	WB060	60 ~ 6,000 g	1.0 g	±3 g	100 ea/min.	380 mm	600 mm	Multi Range
	WC150	0.2 ~ 15 kg	5 g	±10 g	70 ea/min.	400 mm	800 mm	Single Range
	WC300	0.2 ~ 30 kg	10 g	±10 g	45 ea/min.	500 mm	1,000 mm	Multi Range
	WC600	0.5 ~ 60 kg	10 g	±30 g	40 ea/min.	600 mm	1,200 mm	Single Range

Max. Accuracy and Max. Throughput depend on the condition of weighed products.

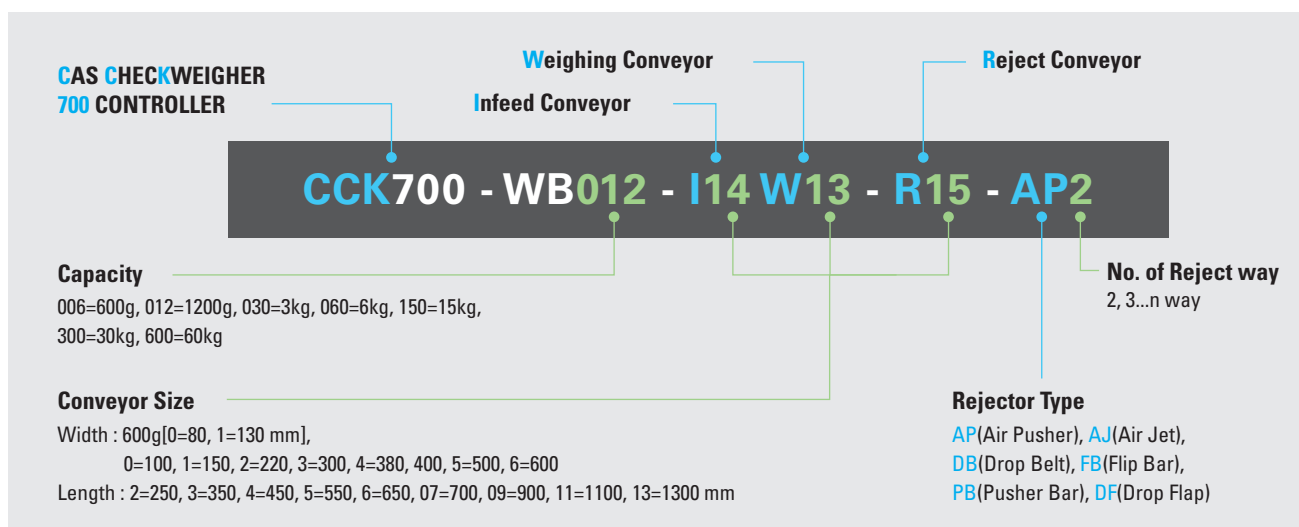
### Conveyor Size of Weighing Part by Capacity

[ Legend ; ○=600g / ⊙=1,200g / ☆=3kg / ★=6kg / ◇=15kg / ◆=30kg / ◆=60kg ]

(unit: mm)

Length/Width	80 (W)	100 (W)	150 (W)	220 (W)	300 (W)	380 (W)	400 (W)	500 (W)	600 (W)
150 (L)	○	○							
250 (L)		⊙	○⊙	⊙☆☆					
350 (L)			○⊙	⊙☆☆	⊙☆☆				
450 (L)			⊙	⊙☆☆	⊙☆☆	★			
550 (L)					☆☆	★			
650 (L)						★			
700 (L)							◆◆	◆◆	
900 (L)							◆	◆◆	◆◆
1,100 (L)								◆◆	◆◆
1,300 (L)									◆◆

### Model Code



# CCK700 Light Weight

## Smart Checkweigher

**Capacity** 600 / 1,200 g

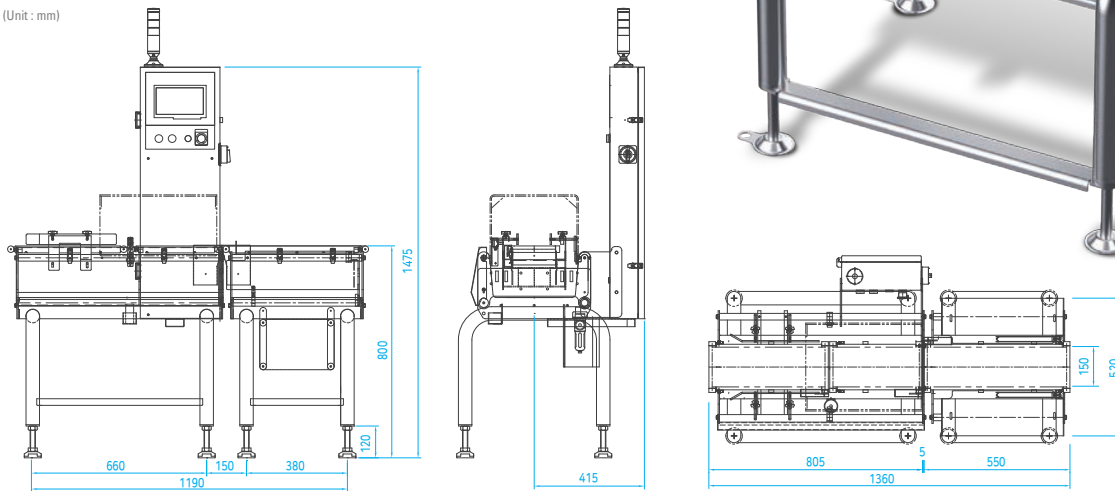
**Max. Accuracy** ±0.1 / ±0.3 g

**Max. Throughput** 400 / 320 ea/min.



### Dimension

(Unit : mm)



### Specification

Model	CCK700-WB006		CCK700-WB012	
	-I15W02	-I14W03	-I14W13	-I23W24
Capacity (g)	600		1,200	
Weighing Range (g)	3~300	6~600	6~600	10~1,200
Display Resolution (g)	0.05	0.1	0.1	0.1
Max. Accuracy (g)	±0.1	±0.2	±0.2	±0.3
Max. Throughput (ea/min.)	400	320	320	240
Conveyor Belt Speed (m/min.)	10~110		10~110	
Product Dimension (mm)	Width	10~130	20~150	20~220
	Length	40~200	45~300	45~400
	Height	3~120		5~180
Conveyor Dimension (mm)	Feed	150(W) x 550(L)	150(W) x 450(L)	220(W) x 350(L)
	Weighing	130(W) x 250(L)	130(W) x 350(L)	150(W) x 350(L)
	Reject	150(W) x 450(L)	150(W) x 450(L)	220(W) x 450/550(L)
Rejector	Flip bar, Drop belt, Pusher bar, Air jet, Air pusher			

Max. Accuracy and Max. Throughput depend on the condition of weighed products.

# CCK700 Middle Weight

## Smart Checkweigher

Capacity 3 / 6 kg

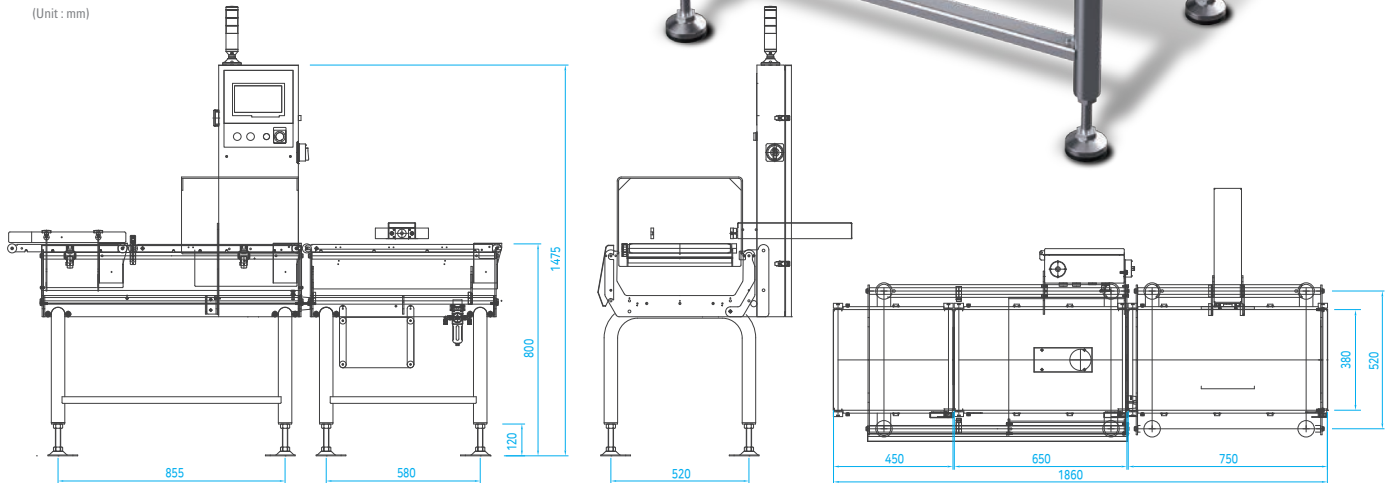
Max. Accuracy  $\pm 1 / \pm 3$  g

Max. Throughput 170 / 100 ea/min.



### Dimension

(Unit : mm)



### Specification

Model	CCK700-WB030			CCK700-WB060		
	-I23W24	-I34W35	-I45W46	-I34W35	-I45W46	
Capacity (g)	3,000			6,000		
Weighing Range (g)	30~3,000			30~3,000	60~6,000	
Display Resolution (g)	0.5			0.5	1.0	
Max. Accuracy (g)	$\pm 1.0$			$\pm 1.5$	$\pm 3.0$	
Max. Throughput (ea/min.)	170	140	110	100	90	
Conveyor Belt Speed (m/min.)	10~80			10~65		
Product Dimension (mm)	Width	20~220	20~300	20~380	20~380	
	Length	50~400	50~500	50~600	50~600	
	Height	3~250			5~350	
Conveyor Dimension (mm)	Feed	220(W) × 350(L)	300(W) × 450(L)	380(W) × 550(L)	300(W) × 450(L)	380(W) × 550(L)
	Weighing	220(W) × 450(L)	300(W) × 550(L)	380(W) × 650(L)	300(W) × 550(L)	380(W) × 650(L)
	Reject	220(W) × 550(L)	300(W) × 550(L)	380(W) × 650(L)	300(W) × 550(L)	380(W) × 650(L)
Rejector	Flip bar, Drop belt, Pusher bar, Air pusher					

Max. Accuracy and Max. Throughput depend on the condition of weighed products.

# CCK700 Heavy Weight

## Smart Checkweigher

**Capacity** 15 / 30 / 60 kg

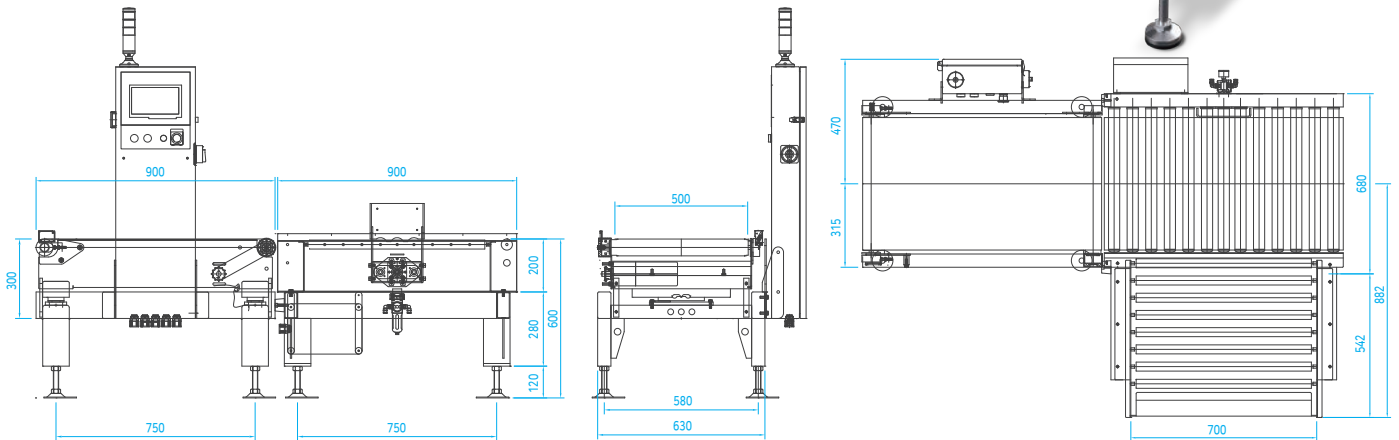
**Max. Accuracy** ±10 / ±10 / ±30 g

**Max. Throughput** 70 / 45 / 30 ea/min.



### Dimension

(Unit : mm)



### Specification

Model	CCK700-WC150		CCK700-WC300		CCK700-WC600		
	-W407	-W409	-W509	-W511	-W611	-W613	
Capacity (g)	15		30		60		
Weighing Range (g)	0.2~15		0.3~30		0.5~60		
Display Resolution (g)	5		10		10		
Max. Accuracy (g)	±10		±10		±30		
Max. Throughput (ea/min.)	70	50	45	40	40	30	
Conveyor Belt Speed (m/min.)	21(±14) / 36(±24)		21(±14) / 36(±24)		21(±14) / 36(±24)		
Product Dimension (mm)	Width	20~400		20~500		20~600	
	Length	50~600	80~800	200~800	200~1,000	200~1,000	200~1,200
	Height	10~500		10~500		10~500	
Conveyor Dimension (mm)	Feed	400		500		600	
	Weighing	700(L)	900(L)	900(L)	1,100(L)	1,100(L)	1,300(L)
	Reject	700(L)	900(L)	900(L)	1,100(L)	1,100(L)	1,100(L)
Rejector	Pusher roller, Air pusher						

Max. Accuracy and Max. Throughput depend on the condition of weighed products.

# CCK600A/2000A

## Auto-Checkweigher

### Features

- High precision & Simplification
- High level precision of 0.08g (3σ)
- IP65
- 7 inch color touch screen & Image import from USB
- Stores up to 1000 products
- Unique modular, Lightweight & compact design
- Modbus communication, Various In/Outputs, Ethernet based printer, Data summary

### Specification

Model	CCK600A	CCK2000A
Capacity (g)	600	500/2000
Display Resolution (g)	0.01	0.01/0.1
Max. Accuracy (3σ)*1	0.08 g	0.08/0.18 g
Max. Throughput (ea/min.)	400	320
Conveyor Belt Width (mm)	120	200
Weighing Conveyor Length (mm)	240	350
Conveyor Belt Speed	10~84	10~74
Product Dimension	Width (mm)	120
	Length (mm)	22 ~ 220
Power	Simple phase AC100-240V(+10%, -15%), 50/60 Hz, 180VA	
Operating Temperature	-5°C ~ 40°C	



# CNI

## Metal Detector

### Features

- Best performance with all kinds of aluminum packaging products: Moisturized or vaped product or foil box
- Highly sensitive detection of precise magnetic sensor with high temperature or moisturized products
- Easy operation without special setting
- Independant upper and lower magnetic sensor: Rare defection and high efficiency
- Detection temperature range between 15°C and 80°C available with frozen food and in vaporized environment
- Highly sensitive detection with food of high salinity and moisture: Confectionery, Frozen, Condiment and etc.

### Specification

Model	CNI250
Length of Conveyor	1,000 mm
Belt Width	250 mm
Pass Height	Fixed/Select from 30, 40, 50, 60, 70, 80, 90 mm
Sensor	Magnetic
Detection Part	Width 230 mm, full height
Infeed Height	800±50 mm
Valid Infeed Speed	20 to 40 m/min
Control	Start button/Stop button/Power switch
Sensitivity Level Meter	10-step LED display
Signal Lamp	Red
Effective Infeed Weight	1 kg/unit
Power	AC 100V (50/60 Hz)
Weight of Product	80 kg
Exterior	Stainless steel
Display	5.7", Liquid crystal (touch sensitive)



# CMS-2000

## Metal Detector

### Features

- Character input mode: Easy to register product name by keypad
- Adjust detection signal timer: Adjustable for timer of detection signal
- Attribute: Selection signal contact (A or B)
- New item register: Register Max. 99 items
- Factory setting: Save and restore default setting
- Quick setting by function key(F1~F4)
- Quick setting sensitivity and item name
- Value of product effect
- Quick calibrate passing through products
- Easy to understand product status (Dry or Wet)
- Auto searching for adapted phase angle

OPTION > IP69k (Waterproof) > Linkable to PC > Cover for wind breaking > Plastic belt/Urethane belt

Model	CMS-2000											
	-350						-600					
Conveyor Belt Width (mm)	100	150	200	250	300	350	350	400	450	500	550	600
Aperture Width (mm)	200	250	300	350	400	450	450	500	550	600	650	700
Product weight (kg)	0.4	0.6	1.5	2.0	3.0	6.0	20	20	30	30	40	40
Pass height	Aperture height: -30 mm						Aperture height: -30 mm					
Conveyor Length	900 / 1,000 / 1,100 mm						1,300 / 1,500 / 1,800 mm					
Speed Range	10~70 m/min						10~50 m/min					
Rejector Type	Belt stop, Flip bar, Pusher, Air blast, Drop down, Swing						Belt stop, Pusher, Drop down, Swing					
Power Requirements	200VAC ±10%, 1 Phase, 50/60 Hz						200VAC ±10%, 1 Phase, 50/60 Hz					



CMS-2000-350 ▶



◀ CMS-2000-600

# CMS-4971

## Metal Detector

### Features

- High Sensitivity detection
- IP65
- 7 inch color touch screen, Image Import from USB, Stores up to 1,000 Products
- History Function(Operation/Inspection History)
- Modbus communication, Data output to USB, Ethernet-based printing

### Specification

Model	CMS-4971					
	-3510	A	-3525	-4517	-4525	
Conveyor Belt Width (mm)	250	250	250	350	350	
Conveyor Belt Length (mm)	800	800	800	800	800	
Pass Height (mm)	80	150	230	150	230	
Detection Sensitivity (mm)	Fe	ø0.3	ø0.5	ø0.7	ø0.5	ø0.7
	SUS	ø0.8	ø1.0	ø1.5	ø1.0	ø1.5
Belt Material	Urethane					
Conveyor Belt Speed (m/min)	10 ~ 60					
Display	7inch color touch screen					
Communication Interface	Modbus-TCP/Modbus-RTU/TCP/IP					
Power	Simple phase AC 100~240V(+10%, -15%), 50/60Hz 100VA					
Operating Temperature	0°C ~ 40°C					



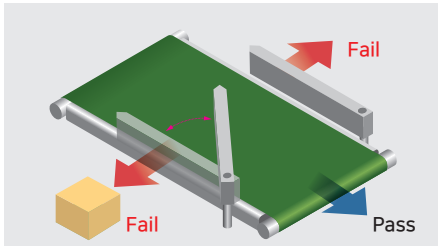
# Rejector

## Standard Specification

- Gate drive system : Pneumatic Drive
- Air Supply : 4~5 kg/cm<sup>2</sup>, 12 L/min
- Pass Height : 700, 810, 920 ±60 mm
- Body Material : All Stainless Steel
- Ingress Protection : IP65(Optional IP67)
- Power : 200~220VAC ±10%, 1ø, 50~60 Hz

## Flip Bar Rejector [FB3]

3 way sort  
For Carton

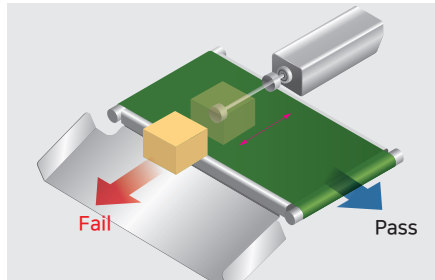


Model Code	R-WB015		R-WB060	
	-R15-FB3	-R15-FB3	-R26-FB3	-R37-FB3
Weight Capacity	1.5 kg		6.0 kg	
No. of Reject Way	3 Ways			
Max. Throughput(*1) [ea/min.]	180	160	140	120
Product Dimension [mm] (*1)	Width	150	220	300
	Length	250	350	450
	Height	150	200	200
Conveyor Dimension	Width [BW]	150	220	300
	Length [RL]	550	650	650
Conveyor Belt Speed	8~110 m/min.		6~80 m/min.	

Max. Throughput depends on size and condition of products.

## Air Pusher Rejector [AP2]

Light Blow  
For High-speed checkweighing and Lightweight product

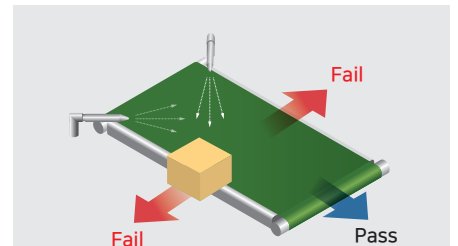


Model Code	R-WB015		R-WB060			
	-R15-AP2	-R25-AP2	-R25-AP2	-R35-AP2	-R46-AP2	
Weight Capacity	1.5 kg		6.0 kg			
No. of Reject Way	2 Ways					
Max. Throughput(*1) [ea/min.]	120	100	100	80	60	
Product Dimension [mm] (*1)	Width	150	220	220	300	380
	Length	250	350	350	450	550
	Height	150	200	200	300	400
Conveyor Dimension	Width [BW]	150	220	220	300	380
	Length [RL]	550	550	550	550	650
Conveyor Belt Speed	8~110 m/min.		6~80 m/min.			

Max. Throughput depends on size and condition of products.

## Air Jet Rejector [AJ3]

Compressed air blow  
For High-speed checkweighing and Lightweight product

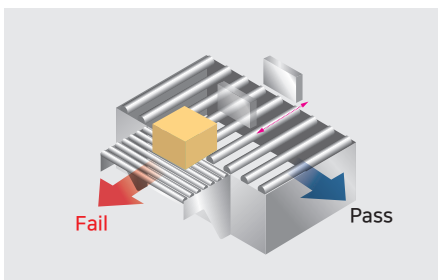


Model Code	R-WB015		
	-R15-AJ3	-R25-AJ3	
Weight Capacity	300 g		
No. of Reject Way	3 Ways		
Max. Throughput(*1) [ea/min.]	360	300	
Product Dimension [mm] (*1)	Width	150	220
	Length	250	350
	Height	100	100
Conveyor Dimension	Width [BW]	150	220
	Length [RL]	550	550
Conveyor Belt Speed	8~110 m/min.		

Max. Throughput depends on size and condition of products.

## Pusher Roller Rejector [PR2]

For Heavyweight product

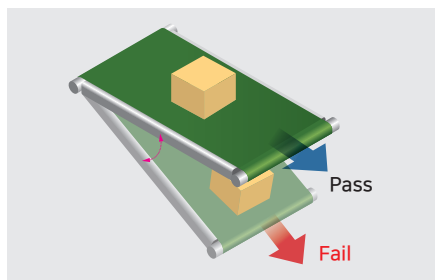


Model Code	R-WC150		R-WC300		
	-R407-PR2	-R409-PR2	-R509-PR2	-R511-PR2	
Weight Capacity	15 kg		30 kg		
No. of Reject Way	2 Ways				
Max. Throughput(*1) [ea/min.]	60	45	45	35	
Product Dimension [mm] (*1)	Width	400	400	500	500
	Length	600	800	800	1000
	Height	400	400	500	500
Conveyor Dimension	Width [BW]	400	400	500	500
	Length [RL]	700	900	900	1100
Conveyor Belt Speed	21~53 m/min.				

Max. Throughput depends on size and condition of products.

## Drop Belt Rejector [DB21]

For Thin product

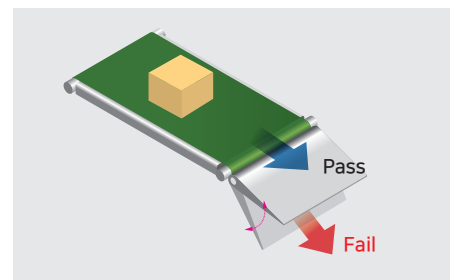


Model Code	R-WB015		R-WB060			
	-R15-DB21	-R25-DB21	-R25-DB21	-R35-DB21	-R46-DB21	
Weight Capacity	1.5 kg		6.0 kg			
No. of Reject Way	2 Ways					
Max. Throughput(*1) [ea/min.]	140	120	120	100	80	
Product Dimension [mm] (*1)	Width	150	120	120	100	80
	Length	250	350	350	450	550
	Height	100	100	100	100	100
Conveyor Dimension	Width [BW]	150	220	220	300	380
	Length [RL]	550	550	550	550	650
Conveyor Belt Speed	8~110 m/min.		6~80 m/min.			

Max. Throughput depends on size and condition of products.

## Drop Flap Rejector [DF2]

For Carton & Raw material



Model Code	R-WB060			
	-R20-DF21	-R30-DF21	-R40-DF21	
Weight Capacity	3 kg			
No. of Reject Way	2 Ways			
Max. Throughput(*1) [ea/min.]	120	100	90	
Product Dimension [mm] (*1)	Width	220	300	380
	Length	350	450	550
	Height	70	70	70
Conveyor Dimension	Width [BW]	220	300	380
	Length [RL]	-	-	-
Conveyor Belt Speed	-			

Max. Throughput depends on size and condition of products.



**CAS**

[www.globalcas.com](http://www.globalcas.com)

**CAS CORPORATION**

CAS BLDG., 1315, YANGJAE-DAERO GANGDONG-GU, SEOUL, KOREA

TEL : 82 2 2225 3500 / FAX : 82 2 475 4668

\* Specifications are subject to change without notice improvement.

