

Network Printing Scale

CL5500N SERIES



Excellent network printing scale for your business

CL5500N is ideal for all wholesale and retail markets. It features various communication interface for effective control of the data and large memory which save up to 10,000 product info.



Clear LCD Graphic Display



Label Cartridge



Embossed Keypads

CL5500N SERIES

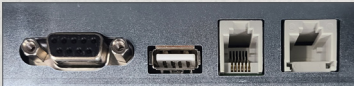
■ Features

Clear Display

Blue LCD display provides clear visibility of product name and numbers.

Network System

CL5500N comes with various interfaces including Ethernet, RS-232, RJ11 and USB-A with which users can build complete network system.



► CL5500N-D I/O

Fast Printing Speed

By applying fast Thermal printer head, CL5500N prints labels at the fastest speed of 100mm/sec providing 202dpi resolution. Also, its label cartridge structure makes label roll replacement process easy and fast.

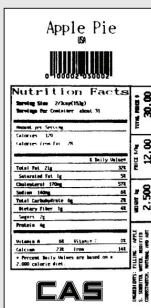
Large Memory Capacity

On large 8MB memory, you can save up to 10,000 product info or 1,000 ingredient info.



Barcode

Nutrition Facts	
Serving Size 2/3cup(153g) Servings Per Container about 31/2	
Amount Per Serving	
Calories 120	Calories from Fat 28
%Daily Value*	
Total Fat 21/2g	4%
Saturated Fat 1/2g	3%
Cholesterol 170mg	57%
Sodium 140mg	6%
Total Carbohydrate 6g	2%
Dietary Fiber less than 1g	4%
Sugars 2g	
Protein 4g	
Vitamin A 6%	Vitamin C 0%
Calcium 23%	iron 14%

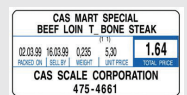
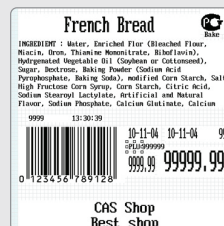


Almost every conventional barcode types are available:

- UPC, EAN13, EAN13A5, I20F5, CODE128, CODE39, CODE93, CODABAR, IATA20F5, GS1 Databar, QR Code etc.

Various Label Formats

Provides various formats of barcode and 45 basic labels. You can also design your own labels, up to 20, via CL-works Pro.

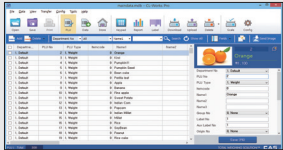


■ PC software : CL-works Pro

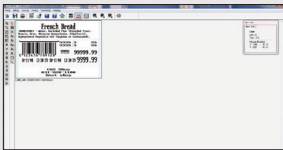
Effectiveness

Manage and edit product information effectively via software program, CL-works Pro

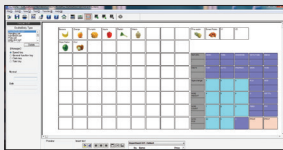
CL-work
Pro



Edit Product Info
Easy PLU editing program, data managing by folders, exporting to excel file



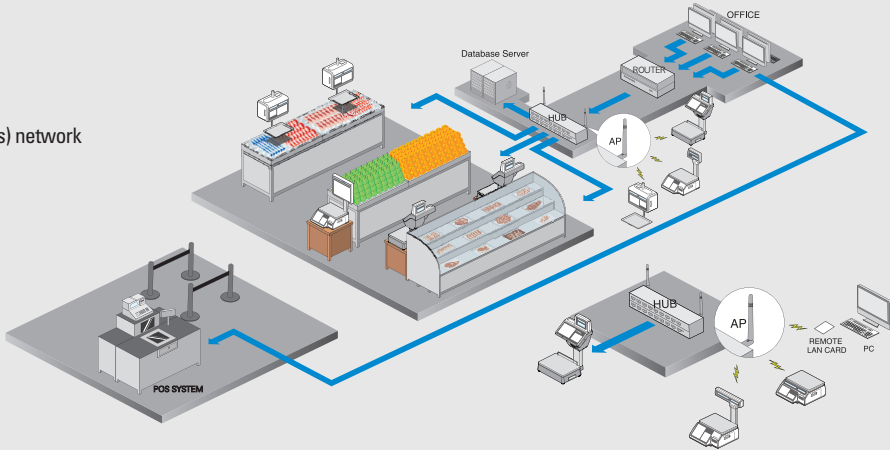
Edit Label
Provides basic formats and 20 editable labels. Easy download function



Edit Keypad
Comfortable keypad select and download. Colored keypad printing possible.

■ Network System

- TCP/IP communication
- IEEE 802.11g wireless network
- Wireless security : WEP64/128, WPA, WPA2
- Supports one-to-one, many-to-many wire(less) network
- Network solution for various markets
 - Suitable for wholesalers, retailers
 - Supports hyper market network system



▲ Wire/wireless mixed network system

▲ Many-to-many wireless network

■ Product Line-up (All compatible with CL5000 via network)



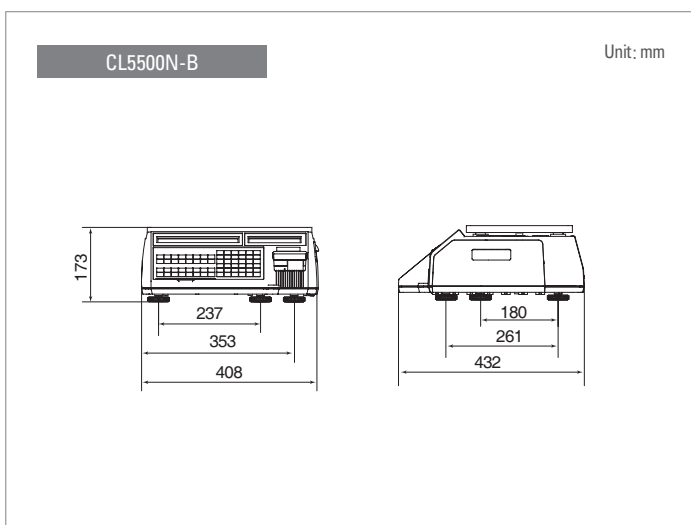
Specifications

Model	CL5500N		
Max (kg) Capacity	3/6	6 / 15	15 / 30
Interval (d)	1/2	2 / 5	5 / 10
Resolution	1/3,000 (Dual interval)		
Display Type	Graphic LCD (202 x 32dot) + Numeric LCD (4/5/6/6)		
Printer Speed (mm/sec)	100		
Printer Resolution (dpi)	202		
Label Size(mm)	Width : 40-60 Length : 30-290		
Power	AC 100 ~ 240V, 50/60Hz		
Operating Temp.(°C)	-10 ~ +40		
Tray Size (mm)(W x D)	B, P, R Type: 383 x 273 D-Type: 380 x 270		
Product Size (mm)(W x D x H)	B-Type: 408 x 432 x 173 R-Type: 408 x 493 x 607	P-Type: 408 x 493 x 542 D-Type: 396 x 464 x 612	
Product Weight (kg)	B-Type: 10.5 R-Type: 11.2	P-Type: 12 D-Type: 12.7	

Options

- Wireless LAN card (wifi)
- Management program (PC)

Dimensions



Dimensions

