



Four VFD display with a full graphic LCD



Cartridge loading type label installation



Direct PLU keys & function keys

CL5000 SERIES

Label/Ticket Printing Scale

CL5000 series is the best network solution for your business. It is innovative and reliable products which are ideal for use in retail markets such as hyper market, large/small markets and butcher shop.

- Flexible & reliable network system (wired/wireless)
- Easy loading label cartridge



CL5000 SERIES



Features

Display - VFD & LCD

The VFD display is used for displaying tare, weight, unit price and total price. The dot matrix LCD is used for all program menus, PLU names, scroll message and etc. The bright blue display gives high legibility for programming and promotion.



Printer & Label

High speed print (100mm/sec)-Cartridge loading type label installation makes so much easier to replacing a new roll of label/ticket.



PLU Keys

The membrane type keypad adds a sophisticated look of CL5000. Double-click function makes so much easier to call double the PLU directly.

ex) 96~114 direct call by double click of 48~72



Memory

Standard memory can hold up to 3,000 PLUs and the expansion memory card offers up to 10,000 PLUs.

Label Formats

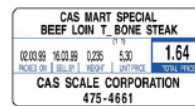
There are 40 preset labels installed in scale and 20 label formats can be modified freely with CLWorks PC Program.

Various Label sizes can be used :

- Continuous Label/ticket - 150mm label

Barcode

Almost every conventional barcode types are available :
UPC, EAN13, EAN13A5, I2OF5, CODE128, CODE39, CODE93, CODABAR, IATA2OF5



Menu System

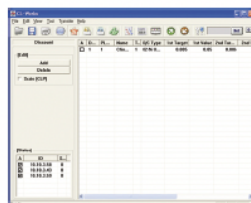
No need to scroll menus for programming changes. Unique 4 digit 'Menu Code' entry pin points the desire program field.

ex) Menu code "1120" is for editing PLU name

PC software : CL-works

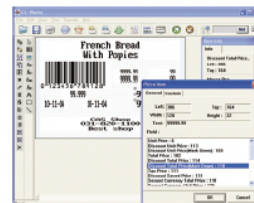
User-Friendly Scale management software

PLU programming, store data, sales report, label editor, key-pad editor and much more, control all the program data by CL-works program.



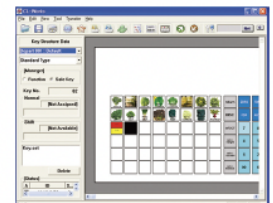
PLU Editor

Enable to easy PLU control
Allows PLUs management by excel



Label Editor

20 modifiable label formats
Easy downloading of label formats



Keypad Editor

Easy to setup and download
Key design colour Image
Keypad supported



Label / Ticket Printing Scale

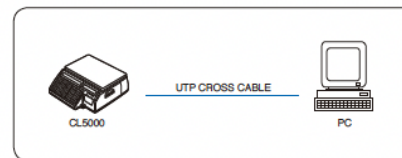
Product Line-up

CL5000 Series is suitable for any market size.

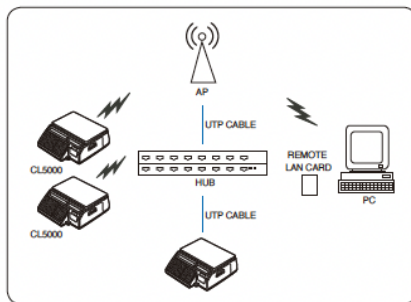


Network System

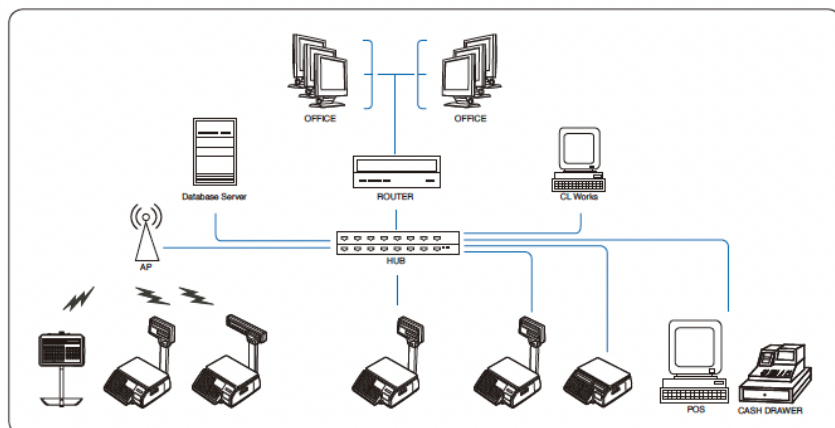
- ▶ TCP/IP communication protocol
- ▶ IEEE802.11G specification wireless network
- ▶ 64/128 bit WEP data security system, WPA(TKIP), WPA-II
- ▶ One to one & multi to multi & wired/wireless network
- ▶ Network structure for
 - Large, medium and small independent markets
 - Pre-pack and self-service counter
 - Hyper market



1 to 1



Multi to Multi



Mixed with Wired / Wireless Network

CL5000 SERIES

Label / Ticket Printing Scale

SPECIFICATIONS

Model	CL5000		
Max.capacity (kg)	6	6/15	15/30
Readability (g)	2	2/5	5/10
External resolution	1/3,000(Dual interval)		
Display digit	4/5/6/6 (Preset tare/weight/unit price/total price)		
Display type	4 VFD displays + full graphic LCD display or full graphic LCD display (G type only)		
Printing speed	100mm/sec		
Printer resolution	202dpi		
Label size (mm)	Width : 40 ~ 60 Length : 30 ~ 120		
Power	AC 100 ~ 240V, 50/60Hz		
Operating temperature	-10°C ~ +40°C		
Platter size (mm)	382(W) x 246(D)		
Dimensions (mm)	B type : 480(W) x 432(D) x 173(H) G,R type : 408(W) x 493(D) x 607(H) P type : 408(W) x 493(D) x 542(H) H type : 420(W) x 281(D) x 706(H) S type : 408(W) x 493(D) x 703(H)		
Product weight (kg)	B type : 10.5 G,R type : 12.0 P type : 11.2 H type : 12.2 S type : 15.1		

FEATURES

- Memory capacity: 3,000 plus & 1,000 ingredients
- Speed key
 - Standard : 96 speed keys [48 keys x 2 (double-click)]
 - Pole : 144 speed keys [72 keys x 2 (double-click)]
 - Hanging : 144 speed keys [72 keys x 2 (double-click)]
 - Self service : Up to 172 speed keys
- Supporting free label format design
- High-speed thermal printer
- Cartridge -loading-type label installation
- 45 fixed format & 20 customized format design

OPTION

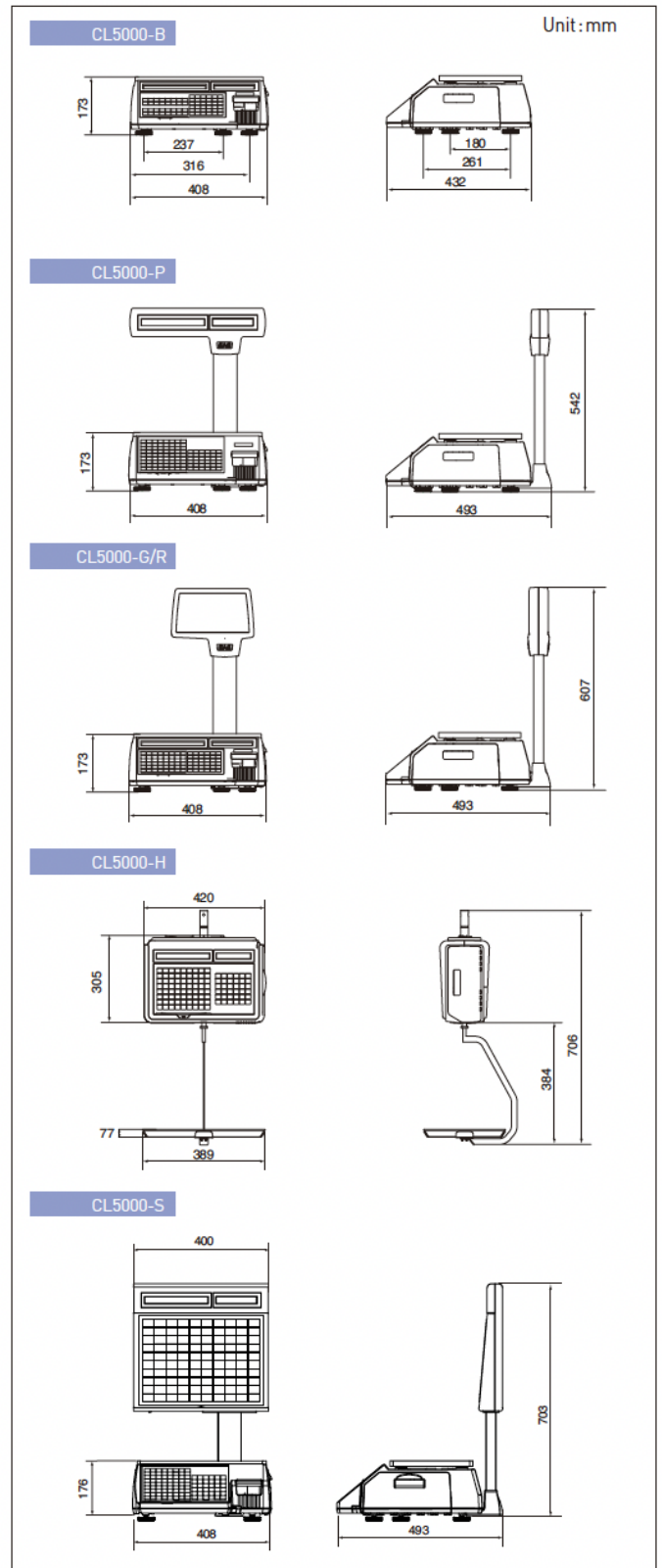
- Communication network (TCP/IP)
- Dust protection cover
- Large platter / Fish tray
- Wireless bridge card
- Platter with back rail
- PC manager program (CL-Works)
- 2MB extension memory (10,000 PLU & 2,000 ingredients)
- Metal-dome switch

CAS

CAS BLDG., # 440-1, SUNGNAE-DONG,
GANGDONG-GU, SEOUL, KOREA
TEL_ 82 2 2225 3500
FAX_ 82 2 475 4668
<http://www.globalcas.com>

Specifications are subject to change for improvement without prior notice.

DIMENSIONS



C-90019002