



Bundles



Mobile
Management



ECR Interface
(Text Insert)

CD SERIES

DVR Security Platform

With the CD Series embedded DVR, enjoy unbeatable performance and stability at an affordable price. Offers high quality D1 images and real time network transmission.

- 13 Models Available
- Real Time Transmission
- Dual Stream Support
- ECR Interface
- Remote Management Software
- Text Insert Function



CAS

CD SERIES | DVR Features

CD204B/CD208B



- 4 ch/8 ch
- H.264 Video
- 1 SATA HDD Bay

CD304L/CD308L



- 4 ch/8 ch
- H.264 Video
- Text Insert Function
- 1 SATA HDD Bay

CD304M/CD308M/CD316M/CD416X



- 4 ch/8 ch/16 ch
- H.264 Video
- Text Insert Function
- 2 x SATA HDD Bay or 1 SATA HDD Bay and 1 SATA DVD

CD304S/CD308S/CD316S/CD316X/CD916D



- 4 ch/8 ch/16 ch
- H.264 Video
- Text Insert Function
- 4 x SATA HDD Bay or 3 x SATA HDD Bay and 1 SATA DVD

Text Insert Function

Reduce theft and increase your profits with Text Insertion. Conveniently superimpose your POS system data to the DVR video. Monitor the actions of employees and customers at checkout. Connect 1 POS device or Connect up to 4 POS devices with the optional RS-232 Serial MUX unit.



Remote Management Software

Remote Manager



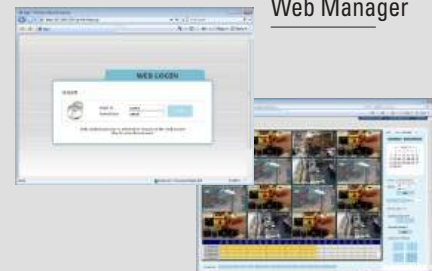
16 Channel live monitoring, VOD playback, & AVI backup

Mobile Manager



Mobile monitoring with 3G phone. Compatible with Windows Mobile, Blackberry, iPhone, & Android

Web Manager



With built-in web server, users can connect to the DVR systems by web browser.

CD SERIES | Camera Specifications

Model	Type	TVL	Lens	Illumination	Axis	Casing	Power	Other Features
 CM140	Dome Camera	420TVL	3.6mm fixed	0.3 Lux		Push & Turn	DC 12V	1/3" Sony Super HAD CCD
 CM161	Dome Camera	600 TVL	3.8mm/F1.8 fixed	0.05 Lux	3	Black	DC 12V	1/3" Sony Super HAD II CCD Sensor
 CM160	Dome Camera	600 TVL	3.8mm fixed	0.05 Lux	3	Black	DC 12V	CNB Monalisa
 CM160W	Dome Camera	600 TVL	3.8mm fixed	0.05 Lux	3	White	DC 12V	CNB Monalisa
 CM540	IR Dome Camera	420TVL	3.6mm fixed	12 LED			DC 12V	1/3" Sony Super HAD CCD
 CM561	IR Dome Camera	600 TVL	3.8mm/F1.8 fixed	0.05Lux	3	Black	DC 12V	1/3" Sony Super HAD II CCD Sensor / Built-in OSD Menu / Built-in IR-LEDs(24pcs)
 CM750	Eyeball IR Dome Camera	540TVL	3.6mm fixed	24 LED	3		DC 12V	Vandal Resistant / 1/3" Sony Super HAD CCD
 CM260	Dome Camera	600 TVL	2.8-10.5mm Auto Iris Vari-focal(AVF)	0.1 LUX	3	Black	Dual Voltage	Monalisa / Auto Gain Control(AGC) / Auto Tracing White Balance(ATW)
 CM260W	Dome Camera	600 TVL	2.8-10.5mm Auto Iris Vari-focal(AVF)	0.1 LUX	3	White	Dual Voltage	Monalisa / Auto Gain Control(AGC) / Auto Tracing White Balance(ATW)
 CU740	IR Bullet Camera	420TVL	3.6mm fixed	24 LED			DC 12V	Weatherproof / 1/3" Sony Super HAD CCD,
 CU741	IR Bullet Camera	540TVL	3.6mm fixed	24 LED			DC 12V	Weatherproof / 1/3" Sony Super HAD CCD

Bundled Packages

For greater savings, CAS offers bundled packages which include the DVR & camera. You can choose either a standard camera or an infrared camera.

CD416X w/16 CM561 Cameras






CD304L w/8 CM161 Cameras




CD304S w/4 CM561 Cameras



CD SERIES | DVR Specifications

Category	CD-204B	CD-208B	CD-304L	CD-308L	CD-304M	CD-308M	CD-316M	CD-416X
Model								
Video Format	H.264		H.264		H.264			
Audio Format	G723.1		G723.1		G723.1			
Video Input	4 Ch	8 Ch	4 Ch	8 Ch	4 Ch	8 Ch	16 Ch	16 Ch
Audio Input	1 Ch		1 Ch		1 Ch			
Operating System	Embedded Linux		Embedded Linux		Embedded Linux			
Display/Record Speed (fps)	120/120 fps	240/240 fps	120/120 fps	240/240 fps	120/120 fps	240/240 fps	480/240 fps	480/480 fps
Video Output	1 Composite, 1 VGA, 1 Spot		1 Composite, 1 VGA, 1 Spot		1 Composite, 1 VGA, 1 Spot			
Alarm In/Out	1/1		1/1		4/1	8/1	16/1	16/1
Text Insert Function	No		Yes		Yes			
Storage Bay	1 x SATA HDD Bay Data Backup via USB Port		1 x SATA HDD Bay Data Backup via USB Port		2 x SATA HDD Bay or 1 x SATA HDD Bay & 1 SATA DVD Data Backup via USB Port			
Dimension (inch/mm) W x D x H	10.3 x 9.5 x 1.9 / 262 x 241 x 48		10.6 x 8.5 x 2.8 / 270 x 215 x 71		14.2 x 15 x 2.6 / 360 x 380 x 66			
Power	D/C 12V, 3A		D/C 12V, 3A		D/C 12V, 5A			

Category	CD-304S	CD-308S	CD-316S	CD-316X	CD-916D
Model					
Video Format	H.264				
Audio Format	G723.1				
Video Input	4 Ch	8 Ch	16 Ch	16 Ch	16 Ch
Audio Input	4 Ch				
Operating System	Embedded Linux				
Display/Record Speed (fps)	120/120 fps	120/240 fps	480/240 fps	480/480 fps	480/480 fps (D1)
Video Output	1 Composite, 1 VGA, 1 Spot				
Alarm In/Out	4/4	8/4	16/4	16/4	16/4
Text Insert Function	Yes				
Storage Bay	4 x SATA HDD Bay or 3 x SATA HDD Bay & 1 SATA DVD Data Backup via USB Port				
Dimension (inch/mm) W x D x H	16.5 x 16.9 x 3.5 / 420 x 428 x 88				
Power	D/C 12V, 5A			D/C 12V, 7A	



CAS BLDG., # 440-1, SUNGNAE-DONG,
GANGDONG-GU, SEOUL, KOREA

TEL_ 82 2 2225 3500

FAX_ 82 2 475 4668

<http://www.globalcas.com>

Specifications are subject to change for improvement without prior notice.