

INDUSTRIAL WEIGHING SOLUTION™

WBKC

Compression Load Cell

WBKC is a column, stainless steel compression Load Cell designed for weighbridge, hopper and Truck scales. A large range of capacities is available. Hermetic sealing and built-in surge protection ensure that this product can be used in harsh industrial environment.



Stainless steel construction

Hermetically Sealed

Protection Class IP68

Hermetically Sealed & Protection Class IP68



Truck Scales



Hopper Scales



Scan with your smartphone
to find more products



CAS
www.globalcas.com

WBKC Compression Load Cell

Feature

Stainless steel components

- Ideal for Heavy-duty
- Anti corrosion construction

IP68 with complete hermetic sealing

- Available even in the wettest and harshest environment



Built-in Surge protection

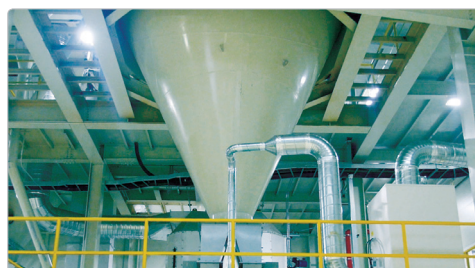
- Protecting internal components from lightning strikes

Suitable for heavy weighing application

- WBKC is suitable for use in heavy weighing application such as weighbridge scales, hopper scales and truck scales.



Truck Scales



Hopper Scales

CI-600A Weighing Controller



CI-600 offers fast and accurate weighing and easy operating system via High-performance.

A/D converter and user-friendly graphic interface.

Suitable for a wide variety of applications from general platform scales to advanced weighing equipment such as Truck Scales, Hopper Scales, Packer Scales and Checker Scales



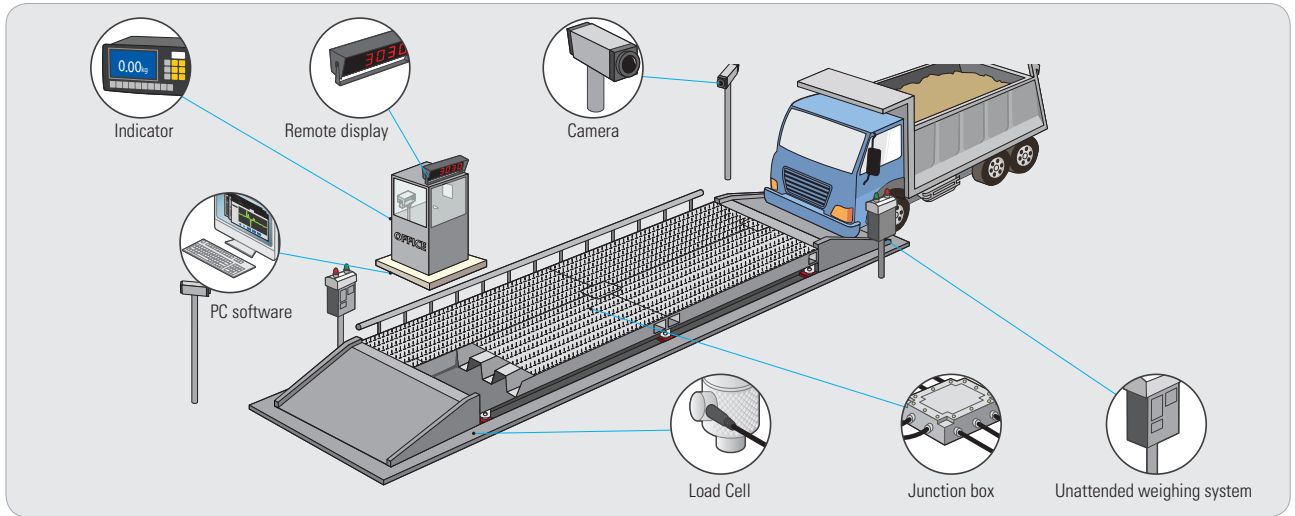
Option

- Analog Out Card (V-out (0-10 V) / I-out (4-20mA))
- RS485/RS422
- BCD Out Card
- Printer
- Remote display



Application

Truck Scale System Configuration



Vehicle weighing

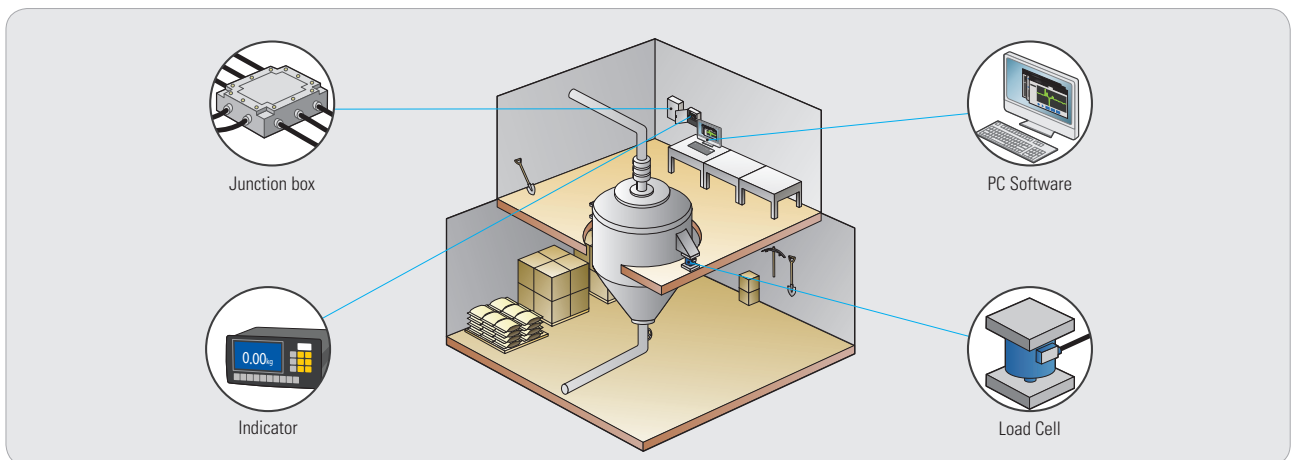
CAS Load Cell (WBKC) is suitable for use in vehicle scales. It allows high-accuracy and simple installation. Via waterproof enclosure and lightning protection, it is available in harsh environment. Vehicle scales which CAS Load Cell is installed offer perfect solution for your business with various equipments.



Warehouse & distribution center



Hopper Scale System Configuration



Process weighing-Hopper and silos

CAS Load Cell assembled with Load Cell accessory is ideal for use in Hopper scales and silo scales. It offers high-accuracy, repeatability and correct measurement in process weighing applications.



Process weighing system



WBKC

Compression Load Cell



Specification

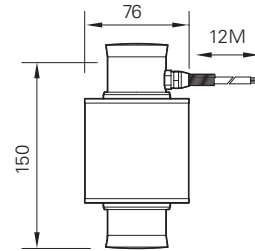
MODEL		WBKC	
Capacity		10, 20, 25, 30tf	
Rated Output		2.0±0.005mV/V	
Zero Balance		0±0.02mV/V	
Accuracy Class		D3	C3
Non-linearity		<±0.03%R.O.	<±0.02%R.O.
Hysteresis		<±0.03%R.O.	<±0.02%R.O.
Combined Error		<±0.03%R.O.	<±0.02%R.O.
Repeatability		<±0.01%R.O.	<±0.01%R.O.
Creep for 30min.		<±0.03%R.O.	<±0.017%R.O.
Temperature Effect On	Zero Value	±0.028%/10°C	±0.014%/10°C
	Span Value	±0.015%/10°C	±0.011%/10°C
Excitation Voltage	Recommended	10V DC	
	Maximum	15V DC	
Resistance	Input	350±3.5Ω, 700±7Ω	
	Output	350±3.5Ω, 700±7Ω	
	Insulation	>2000MΩ	
Compensated Temperature Range		-10°C~+40°C	
Operating Temperature Range		-30°C~+70°C	
Material & Plate		Stainless steel, Buffing	
Cable Specifications		5Ø × 4P or 6P × 12M(PU/PVC)	

Accessory Feature

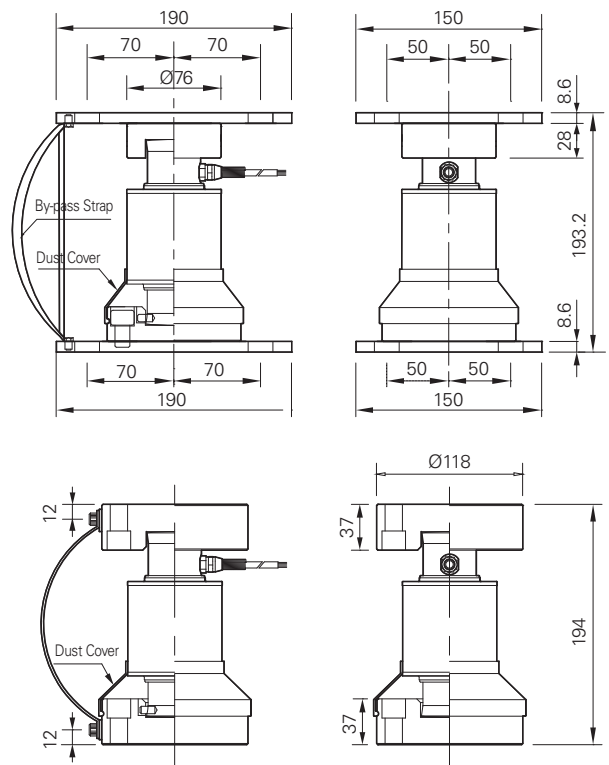
- Suitable for Truck and Weighbridge
- Loading & mounting bearing included
- Safe and compact design

Dimension

WBKC



ACCESSORY ASSEMBLY



CAS BLDG., 1315, YANGJAE-DAERO,
GANGDONG-GU, SEOUL, KOREA
TEL_ 82 2 2225 3500
FAX_ 82 2 475 4668

Specifications are subject to change without notice improvement



<http://www.globalcas.com>

CAS