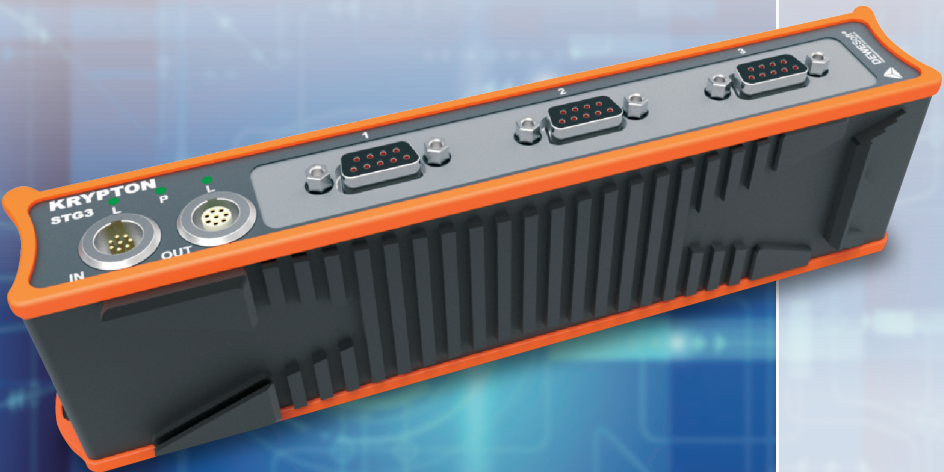


INDUSTRIAL WEIGHING SOLUTION™

KRYPTON ST03

Strain Amplifier

ST03 AMP is a multi-channel digital amplifier which can measure Load Cell, Strain, which transmits outputs of strain gage types of transducers, and various analogue signals.



Possible to measure a variety of strain-gauge type sensor



Standard Analysis Software



Scan with your smartphone to find more products



Possible to measure a variety of strain-gauge type sensor

Simple Design & Easy operating

Standard Analysis Software

CAS
www.globalcas.com

KRYPTON ST03

Strain Amplifier



FEATURE

- Possible to measure a variety of strain-gauge type sensor



- Bridge excitation Programmable selection(DC 1 V~ 15V)
KRYPTON ST3 provides a more accurate and stable output signal by eliminating useless frequencies and noise found in measuring environments.
- Simple Design & Easy operating
- Programmable low-pass filters
- Wide frequency response(20KHz/ch.)
- All bridge sensors can be used(1/4,1/2,Full Bridge)
- Standard Analysis Software



APPLICATION

- Dynamic measurement Strain, Force, Pressure, displacement and high level voltage signal, thermocouple etc....
- Safety diagnosis of structures in civil and architectural engineering



- Lab test equipment with various physical sensors
- Multi Axis loadcell force measurement



SPECIFICATIONS

Analog inputs	
Input channels	3 differential voltage or strain
Input signals	Voltage: 10V, 1V, 100mV or 10mV Strain: 2.100mV/V programmable, Full, Half, Quarter 120/350Ω 3 wire Excitation: 1.. 15V programmable, max. 0.4 W/ch
ADC type	24 bit
Sampling rate	Max 20 kHz per channel(software selectable)
Isolation voltage	Differential input
Input coupling	DC
Input impedance	10 MΩ
Accuracy	±0.03% of reading ±0.02% of range ±0.1mV
Gain drift over temperature	typ. 10ppm/k(max. 40ppm/k)
Offset drift over temperature	typical 0.3 μV/k + 5ppm of range/k
Noise	up to 100 dB
Programmable Shunt(default Values)	100k Ohm
IEPE/ICP Sensors	MSI adapter
Resistance	MSI adapter
Temp. (PT100 to PT2000)	MSI adapter
Temp. (Thermocouple)	MSI adapter
Potentiometer	YES
LVDT	MSI adapter
Charge	MSI adapter
Current	External Shunt
TEDS interface	YES
Advanced functions	Low power, Sensor and Amplifier balance
Connector type	DB9, L181of
General specs	
Interface	LEMO 1T EtherCAT Hybrid cable (Power & Data in one cable)
Power supply voltage	6 to 50V DC
Power consumption	2.4W(4W 120R @ 5V load)
Dimensions	202 x 54 x 38 mm
Weight	Typically 650g
Environmental rating	IP67
Shock & Vibration Rating	> 100g
Temperature range	-40 .. 85 deg. C
Supported Software & Hardware Platforms	Software: DEWESoft X Hardware: KRYPTON modules synchronise with all other DEWESoft Hardware

