

Health Check

HC-1500

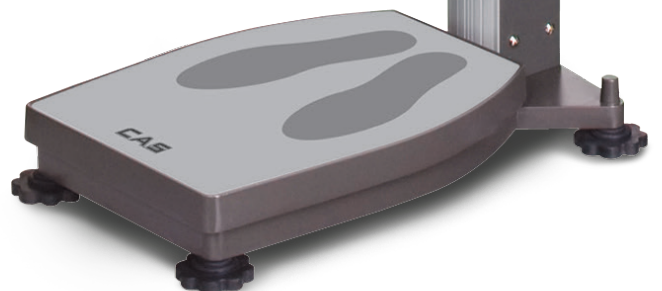


COMPREHENSIVE PHYSICAL METER **ENTRY LEVEL**

Essential device for obesity and growth management in hospital, obesity clinic, pharmacy, health&sports center, school and physical test center.

Measures degree of obesity with classifying Kids/Adults and Men/women.

- Solid structure and rapid measure
- Indicate weight, Obesity degree, BMI
- Tilting Display



CAS

■ Feature

- Solid structure & Easy to use
- Rapid and accurate measure (appx 4 seconds)
- Indicate body weight, height, BMI
- Indicate body mass index
- 50g division weight measure / 1mm division height measure
- Calculate BMI classifying men/women and adult/kid
- Auto-delete measure data function
- Tilting display to switch direction (removable)

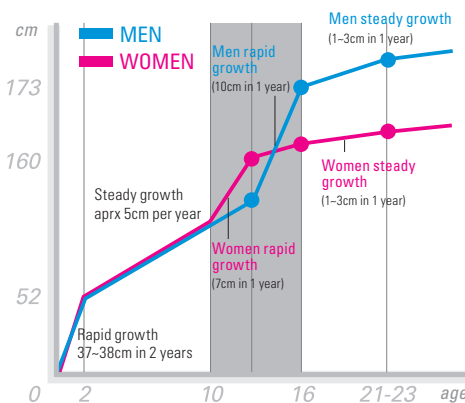
■ Option

- RS-232C (Serial communication with PC)
- Mini printer (Commercial name, Phone number, Short sentence)

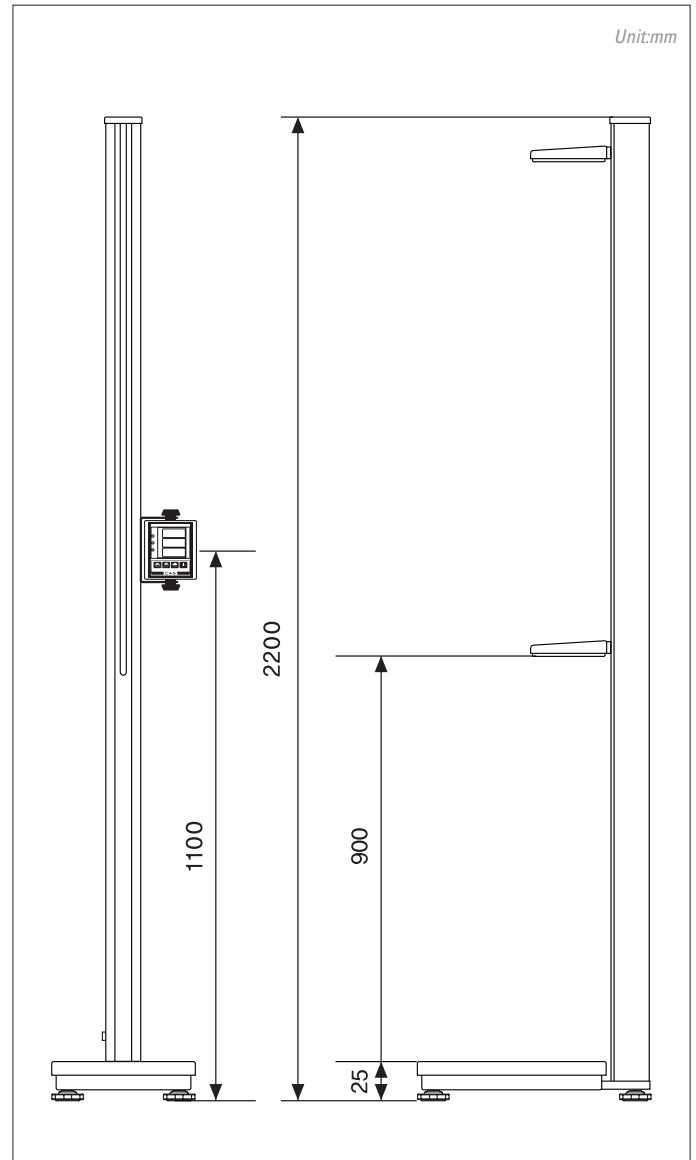
■ Use environment and use

- Hospital, Obesity clinic, Pharmacy
- Health club, Sports center
- School, Physical test center, etc

■ Growth and development period



■ Product drawing



■ Specification

Model		HC-1500
Measure Range	Body Weight	10 ~ 200 kg
	Height	90 ~ 200 cm
Unit	Body Weight	50 g(< 100 kg) / 100 g(≥ 100 kg)
	Height	1 mm
Display		High intensity Red Color FND
Power		Adapter DV 15V/850mA
Product Size		330(W) x 526(D) x 2200(H) mm
Product Weight		12.2 kg

Ver. 1.0 20300202



CAS Global Homepage

CAS CORPORATION

CAS BLDG., 1315, YANGJAE-DAERO
GANGDONG-GU, SEOUL, KOREA
TEL_82 2 2225 3500 / FAX_82 2 475 4668

www.globalcas.com



* Specifications are subject to change without notice improvement.

