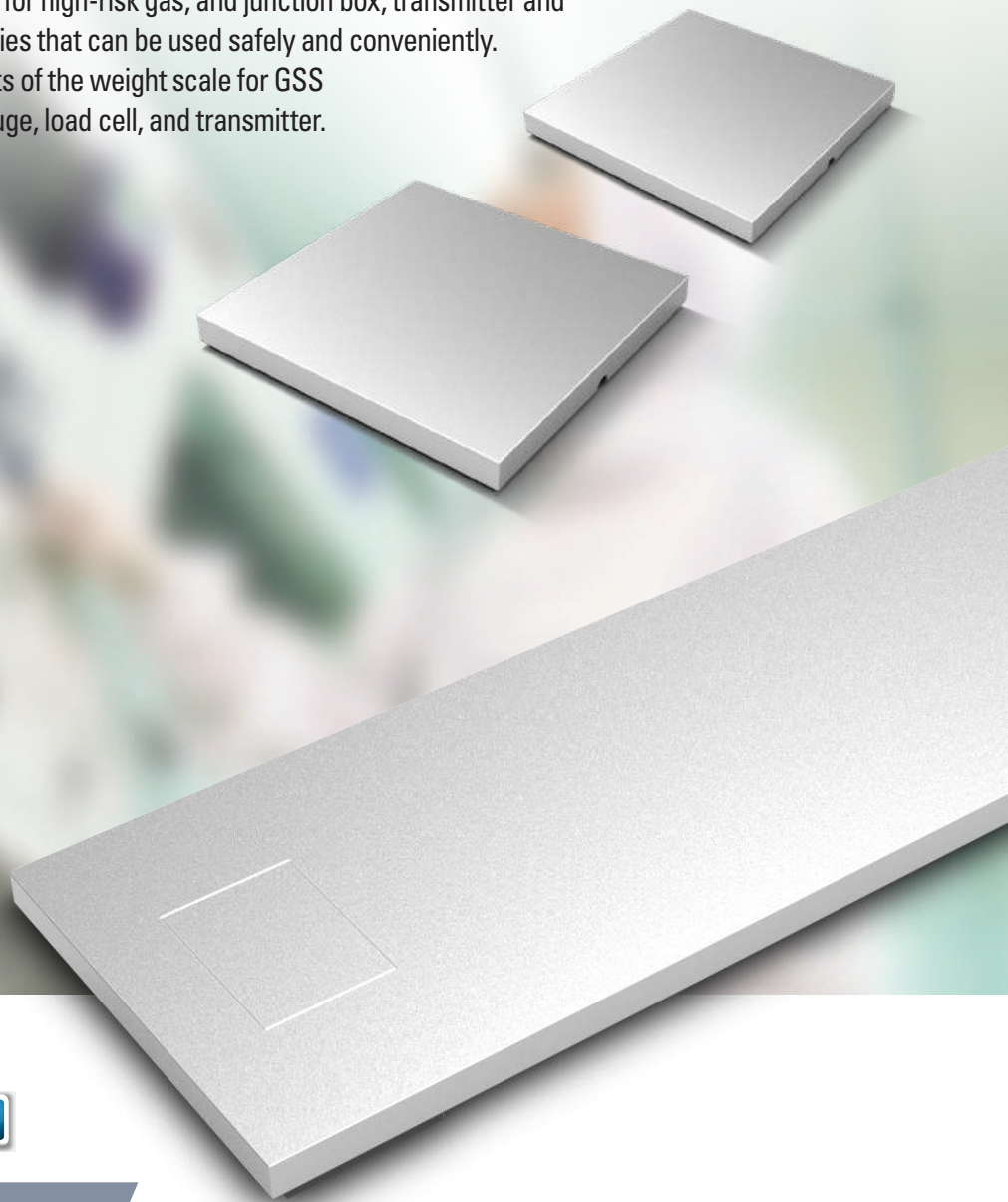
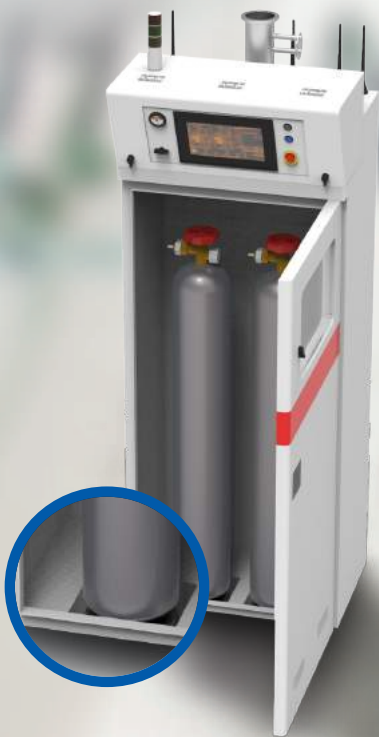


INDUSTRIAL WEIGHING SOLUTION

GSS SERIES

Gas Supply Scale

GSS series is provided in two platform types, mini platform and large platform upon the measurement capacity. Explosion-proof type can be used for high-risk gas, and junction box, transmitter and safety barrier are embedded in the GSS series that can be used safely and conveniently. CAS produces high quality core components of the weight scale for GSS by developing and manufacturing strain gauge, load cell, and transmitter.



Weighing scales for gas supply system

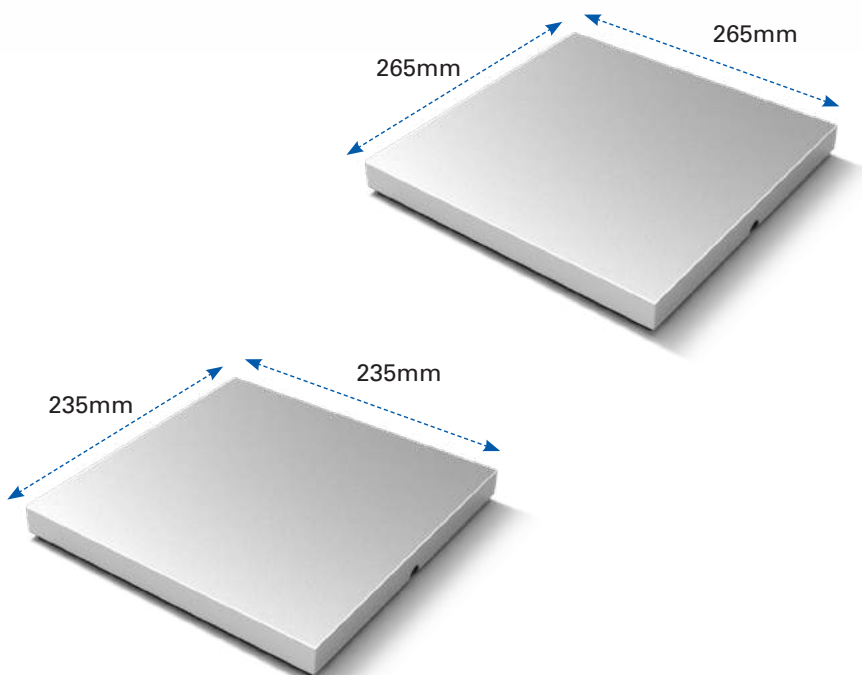
Applied high-precision load cell

Slim design

Supporting diverse interfaces

Weight Scale for Cabinet

- The weighing scale for accurate measurement of gas and chemicals.
- A core technology of weighing scale, in-house manufactured load cell/strain gauge.



1. General Type:

- A highly precise load cell to accurately measure gas and chemicals
- Used in general gas group



2. Water-proof Type

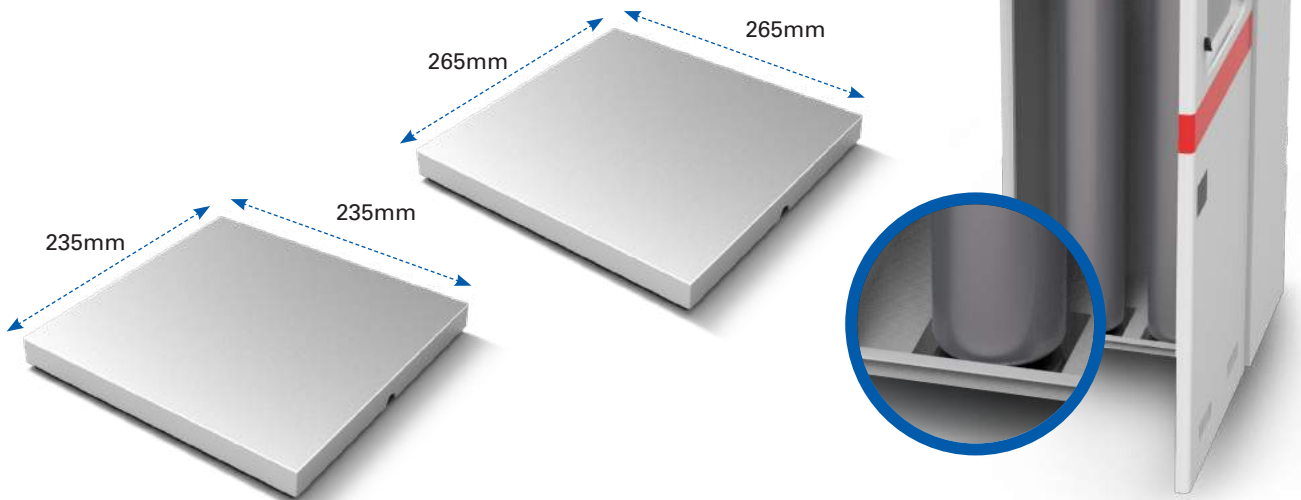
- Uses water and dust proof load cell (IP68)
- Transmitter all-in-one load cell
- Transmitter type can be selected considering the convenience of maintenance/repair



GSS SERIES | WEIGHT SCALE FOR CABINET-EXP. PROOF TYPE

Weight Scale for Cabinet-Exp. proof Type

- Explosion-proof weighing scale for measuring high-risk gas.
- Upgraded from the existing explosion-proof type that maximizes the convenience in installation (Built in type)
- Uses water-proof, dust proof load cell (IP68)



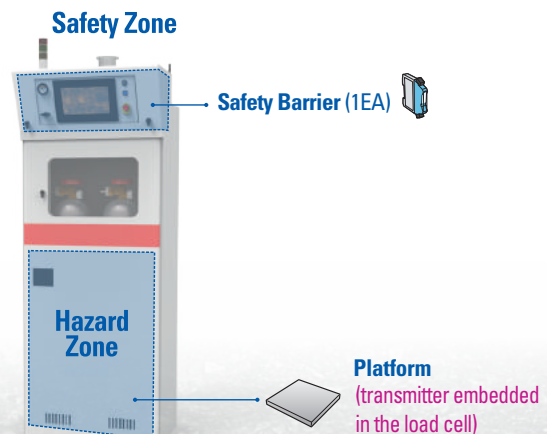
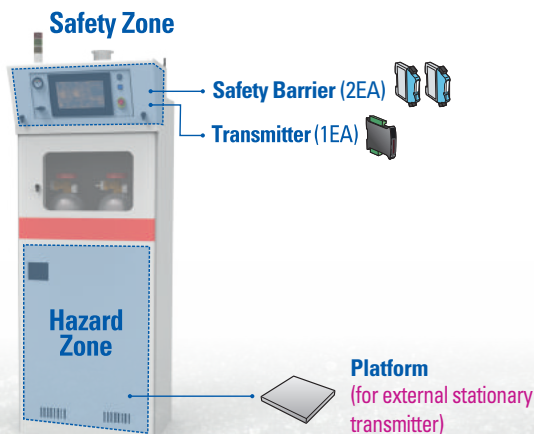
1. Explosion-proof Type (External Transmitter)

- Uses a highly precise load cell for an accurate measurement of gas and chemicals
- Used for high-risk gases
- Ex ia IIC T6



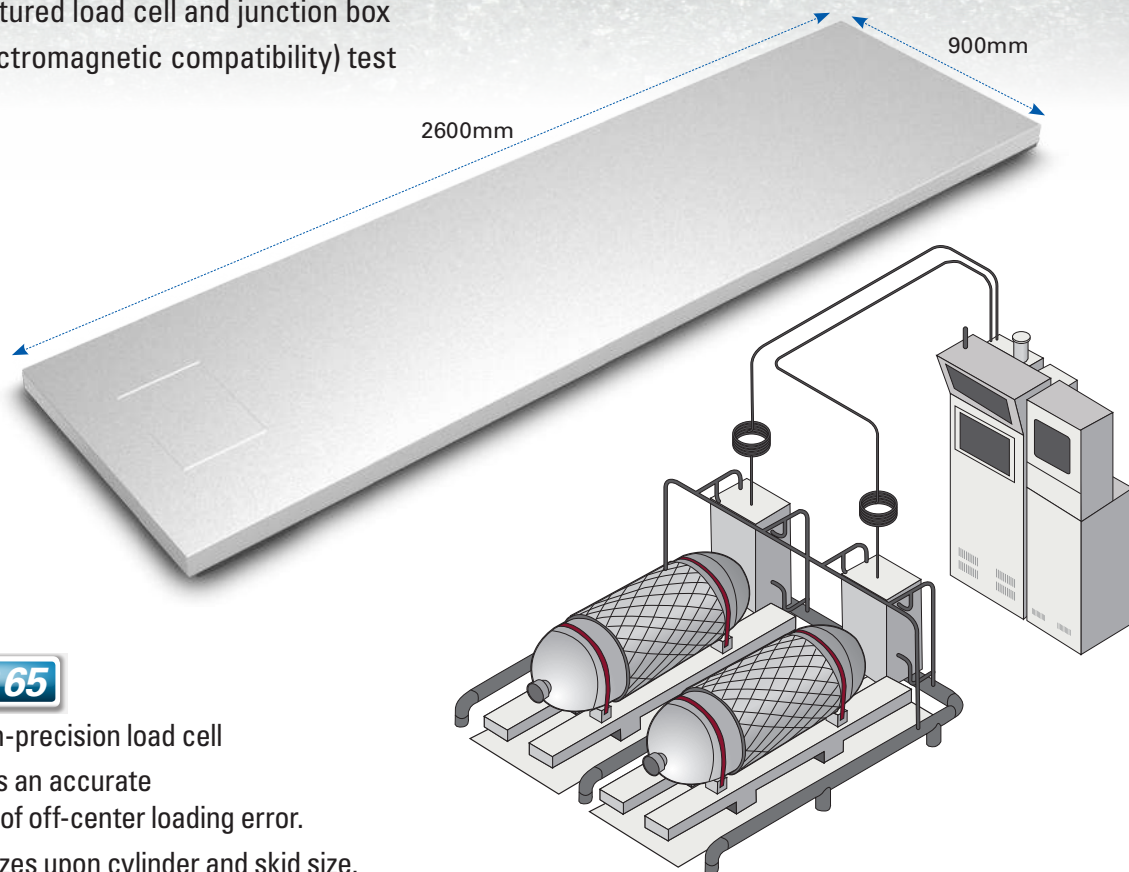
2. Explosion-proof Type (Built in Transmitter)

- Uses a transmitter-embedded explosion-proof load cell
- The transmitter-embedded explosion-proof load cell requires no separate installation of transmitter, boosting the easiness in installation
- Outputs a 4 to 20mA current loop directly from weighing scale, which can be used in one safety barrier only
- Ex ia IIC T6
- Class 1, Division 2 Group A,B,C and D / T6



Weight Scale for BSGS

- A large weight scale for measuring a bulk-type large-volume gas
- Uses in-house manufactured load cell and junction box
- Completed an EMC (electromagnetic compatibility) test



1. General Type

- Water and dust proof high-precision load cell
- A 4-point load cell enables an accurate measurement in absence of off-center loading error.
- Wide selection of scale sizes upon cylinder and skid size.

2. Water-proof Type

- Water and dust proof load cell and junction box
- Built-in transmitter junction box that can be installed in the same type as the existing type
- Stable output and semi-permanent durability

3. Explosion-proof Type (Frame-proof Ex d IIB T6)

- Frame-proof, explosion-proof load cell and junction box
- Uses a frame-proof load cell rather than the existing safety type, therefore, no safety barrier is required to be embedded
- Output type is same as the general type, enables modification from general type to explosion-proof

4. Explosion-proof Type (Intrinsic safety Ex ia IIC T6)

- Uses intrinsic safety load cell and junction box
- Stationary structure of transmitter and safety barrier junction box
- With digital transmitter (WTM), product maintenance becomes easy

GSS SERIES | ISO TRAILER SCALE

Trailer Scale

- H-BEAM or U-SHAPE structure for semi-permanent durability
- Prevention of corrosion by molten zinc plating (H.D.G) on the surface of the structure (optional)
- Slim structure enables easy maintenance.
- Wide selection of sizes upon the trailer data.
- A drainage pump for internal scale emits rain water and clear water.
- Heavy data to be sent via serial interface or 4~20mA
- Enables relay output for pump motion



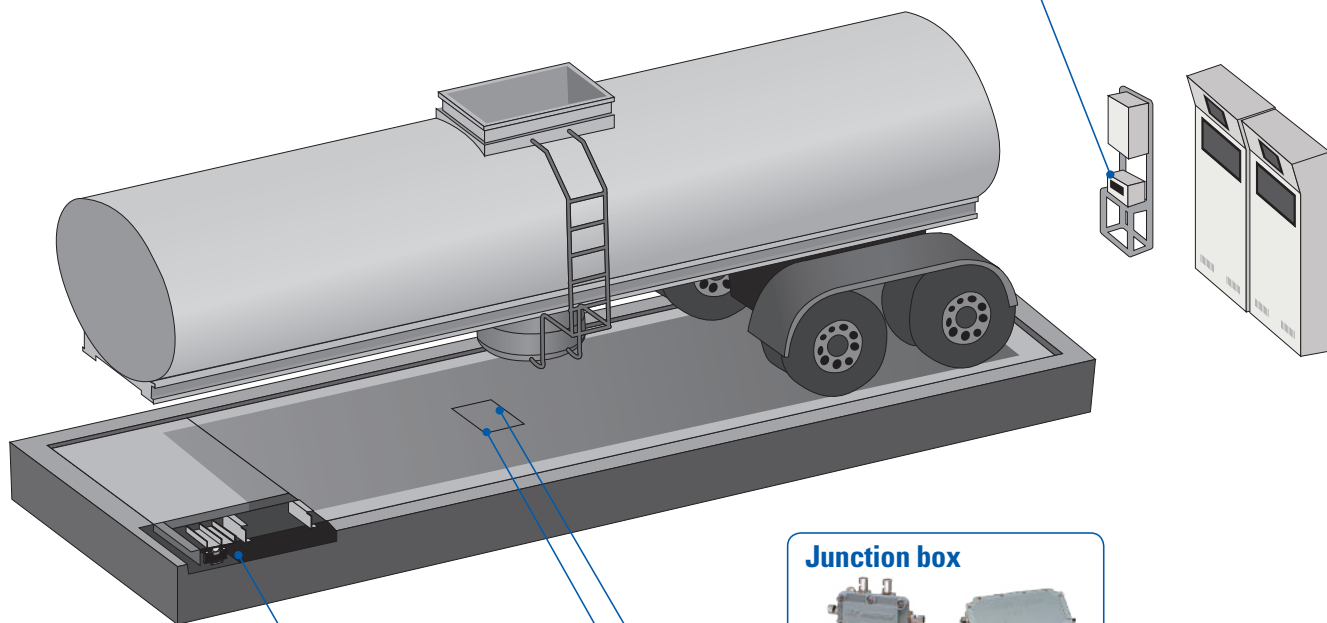
Indicator



General Type



Explosion-proof Type



Junction box



Explosion-proof Type



General Type

Pump



General Sumergible Pump



Explosion-proof Self priming Pump

Load cell



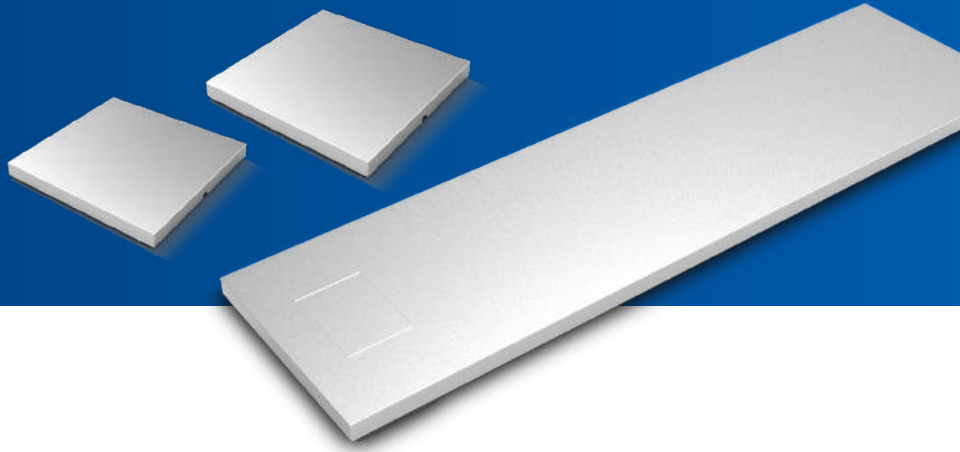
General Type



Explosion-proof Type

GSS SERIES

GAS SUPPLY SCALE



Model Name	Suffix Code							Description	
GSS	□□□	□	-□□	-□□	□	□	-□□	Gas Supply Scale	
Capacity	151							Maximum capacity	15 x 10 ³ kg(150kg)
Converter type	S							Built-In(Standard)	
	W							Built-In(Water Proof)	
	E							External	
	EW							External Water Proof	
	N							None	
Output Signal		A2						Refer to below table	
Platform Size			1D					Refer to below table	
Enclosure				G				General	
				D				Frame Proof	
				X				Intrinsic-Safety	
Terminal(Connector)				A				Standard(SCK-16-3/4)	P/F Out: 0.3m/0.5m, Extension Cable: 4.7m/4.5m
				N				Cable	P/F Out: 5m
				W					WI IPS
				S				Standard(SCK-16-3/4) + Copper Braided Cable	
Nation or Buyer				KR				Korea	
				CN				China	
				US				United States of America	

• Output Signal

Code	Output Signal
A2	4-20mA-2W
A3	4-20mA-3W
V0	1-10V
L0	mV/V
D1	Indicator WTM-300
D2	Indicator WTM-501
D3	Indicator CI-601A
D4	Indicator EXI-601AD

• Platform Size (1)

Code	Platform Size(mm)
*D	235 x 235 x 32
*E	235 x 235 x 35
*F	235 x 235 x 38
*J	250 x 250 x 32
*K	250 x 250 x 35
*L	250 x 250 x 38
*M	265 x 265 x 35
*N	270 x 270 x 32
*O	320 x 320 x 38
*P	350 x 350 x 83
*Q	450 x 450 x 83
*Z	500 x 500 x 83

• Platform Size (2)

Code	Platform Size(mm)
4B	620 x 620 x 140
4D	297 x 813 x 110
4F	800 x 800 x 140
4P	2600 x 700 x 180~200
4Q	2600 x 900 x 180~200
4R	2600 x 1000 x 180~200
4T	2600 x 1200 x 180~200
6B	3000 x 6000 x 450
6C	3000 x 9000 x 450
6D	3000 x 10000 x 450
6E	3000 x 12000 x 450

* : 1=Standard, 2=Wing with fixing hole

Ver. 1.4_02603202



CAS Homepage

CAS Co., Ltd.
 CAS BLDG., #1315, YANGJAE-DAERO,
 GANGDONG-GU, SEOUL, KOREA
 TEL : 82-2-2225-3500 / FAX : 82-2-475-4668

www.globalcas.com



Specifications are subject to change for improvement without prior notice.