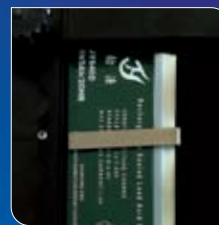




Clear and Highly legible LED display



Rechargeable Battery operation



Rear display(option)

FW-300 SERIES

Waterproof(Basic) SCALE

FW-300 Series has a stainless steel construction that offers durability and cleanliness. Well suited for wash down applications and easily operate anywhere at any time.

- Stainless Steel Body and Weighing Pan.
- Large figure LED display



CAS

FW-300 SERIES | Waterproof(Basic) Scale

Clear and Highly legible LED display

The FW-300 Series has a 20mm LED display with 6 digits.



Rechargeable Battery with Full Charge Indication

FW-300 Series uses a rechargeable battery, making it highly portable.

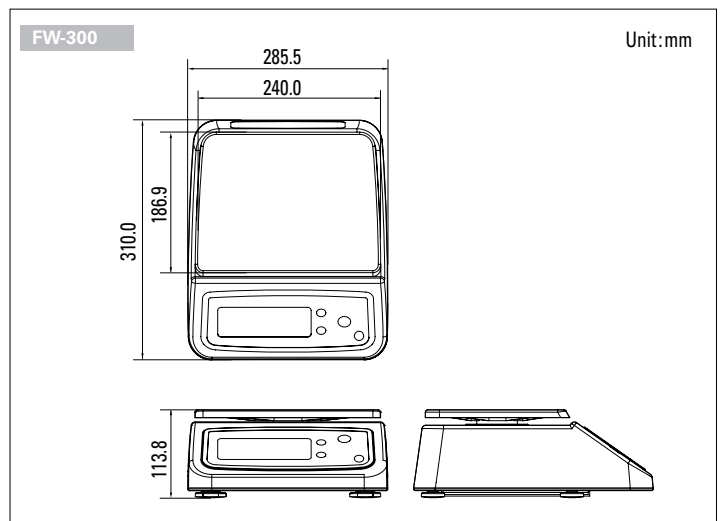


Specifications

TECHNICAL DATA

Model	FW-300 Series				
Capacity (g)	1500	3000	6000	15000	30000
Readability (g)	0.5	1	2	5	10
External Resolution	1/3,000				
Display Digit	6 Digits				
Display Type	LCD				
Operating Temp.	0°C ~ 40°C				
Power	Adaptor 10V/1A, Rechargeable Battery (6V/5Ah)				
Battery Life	70hrs (single display) continuous use with 9 hours recharge time				
Platter Size (mm)	240(W) x 186.9(D)				
Dimensions (mm)	258.5(W) x 310(D) x 113.8(H)				
Product Weight (kg)	3.5				

DIMENSIONS



FEATURES

- Washable (Dust & Waterproof)
- Stainless Steel Body and Weighing Pan
- Clear and Highly legible LED display
- Soft touch Tact Key
- Auto Power Off
- Low Battery Indication
- Recharge Battery Operation
- Built in Adaptor

OPTIONS

- Rear display (Dual display)

LINE UP



▲ SW-1W



▲ SW-1WR



▲ FW-200

APPLICATIONS



▲ Meat packing plant



▲ Fish market



▲ Grain market

CAS

CAS BLDG., # 440-1, SUNGNAE-DONG,
GANGDONG-GU, SEOUL, KOREA

TEL_ 82 2 2225 3500

FAX_ 82 2 475 4668

<http://www.globalcas.com>

Specifications are subject to change for improvement without prior notice.